

October 27, 2025

ADDENDUM NO. 2



RE: Curbside Exterior Improvements
West Virginia International Yeager Airport (CRW)
Charleston, West Virginia
Architect's Project No. 25094

TO: Prospective Bidders

FROM: ZMM, Inc. Architects and Engineers

This Addendum forms a part of the Contract Documents and modifies the original Bidding Documents.

ATTACH THIS ADDENDUM TO THE FRONT COVER OF THE PROJECT MANUAL AND ACKNOWLEDGE RECEIPT OF THIS ADDENDUM IN THE SPACE PROVIDED ON THE BID FORM.

PART 1 - BIDDERS' QUESTION AND RESPONSE

A. Question: Please identify the brand/model of the existing elevator to be upgraded.

1. Response: The elevator is a 2500#, hydraulic Dover elevator.

PART 2 - CHANGES TO SPECIFICATIONS

A. REPLACE Section 095423 "Linear Metal Ceilings" with replacement Section as attached to this Addendum.

B. REPLACE Section 074213.23 "Metal Composite Material Wall Panels" with replacement Section as attached to this Addendum.

C. ADD Section 323300 "Site Furnishings" as attached to this Addendum.

PART 3 - CHANGES TO DRAWINGS

A. Refer to the following revised Drawings as attached to this Addendum:

1. Drawings Title Sheet
2. Sheet No. A110R1 – Overall Ground Floor Plan – Demolition
3. Sheet No. A130R1 – Overall Ground Floor Plan
4. Sheet No. A131R1 – Ground Floor Plans
5. Sheet No. A132R1 - Ground Floor Plans "B" & 'C'
6. Sheet No. A134R1 – Reflected Ceiling Plan – Area 'A'
7. Sheet No. A135R1 – Reflected Ceiling Plan – Area 'A' & 'B'
8. Sheet No. A136R1 – Elevations

Blacksburg
1116 South Main Street
Blacksburg, Virginia 24060
(540) 552-2151

Charleston
222 Lee Street West
Charleston, West Virginia 25302
(304) 342-0159

Marietta
149 Acme Street, Suite A
Marietta, Ohio 45750
(740) 371-9001

Martinsburg
5550 Winchester Avenue
Berkeley Business Park, Suite 5
Martinsburg, West Virginia 25405
(304) 342-0159

- 9. Sheet No. A137R1 – Elevations
- 10. Sheet No. A138R1 – Enlarged Elevations
- 11. Sheet No. A140R1 – Canopy Section
- 12. Sheet No. E401R1 – Lighting New Work Plan

END OF ADDENDUM

Attachments:

Section 095423 “Linear Metal Ceilings”	8 pages
Section 074213.23 “Metal Composite Material Wall Panels”	10 pages
Section 323300 “Site Furnishings”	7 pages
Revised Drawings as listed above.....	42” x 30”

Blacksburg
 1116 South Main Street
 Blacksburg, Virginia 24060
 (540) 552-2151

Charleston
 222 Lee Street West
 Charleston, West Virginia 25302
 (304) 342-0159

Marietta
 149 Acme Street, Suite A
 Marietta, Ohio 45750
 (740) 371-9001

Martinsburg
 5550 Winchester Avenue
 Berkeley Business Park, Suite 5
 Martinsburg, West Virginia 25405
 (304) 342-0159

SECTION 095423 - LINEAR METAL CEILINGS

PART 1 - GENERAL

1.1 SUMMARY

A. Section Includes:

1. Linear metal ceilings.

1.2 COORDINATION

- A. Coordinate layout and installation of linear metal pans and suspension system with other construction that penetrates ceilings or is supported by them, including light fixtures, HVAC equipment, fire-suppression system, and partition assemblies.

1.3 PREINSTALLATION MEETINGS

- A. Preinstallation Conference: Conduct conference at Project site.

1.4 ACTION SUBMITTALS

- A. Product Data: For linear metal ceilings.

- B. Shop Drawings: For linear metal ceilings.

1. Include reflected ceiling plans, sections, and details, drawn to scale, showing the following:

- a. Linear ceiling patterns and joints.
- b. Ceiling suspension members.
- c. Method of attaching hangers to building structure and locations of cast-in-place anchors, clips, and other ceiling attachment devices whose installation is specified in other Sections.
- d. Ceiling-mounted items including, but not limited to, light fixtures, diffusers, grilles, speakers, sprinklers, and access panels.
- e. Ceiling perimeter and penetrations through ceiling; trim and moldings.

- C. Samples: For each exposed product and for each type, color, and finish specified, 12 inches long in size.

- D. Samples for Initial Selection: For units with factory-applied colors and finishes.

1. Include Samples of accessories involving color and finish selections.

- E. Samples for Verification: For the following products:
 - 1. Linear Metal Pans: 12 inches long by full-width Samples of each type, color, and finish and a 12-inch- long spliced section.
 - 2. Suspension-System Members: 12-inch- long Sample of each type.
 - 3. Exposed Molding and Trim: 12-inch- long Samples of each type, color, and finish.
 - 4. Filler Strips: 12-inch- long Samples of each type, color, and finish.
 - 5. Sound Absorbers: 12 inches long by full width.
 - 6. End Caps: Full size.
- F. Delegated Design Submittals: For design of attachment devices.

1.5 INFORMATIONAL SUBMITTALS

- A. Qualification Data: For testing agency.
- B. Product Test Reports: For each linear metal ceiling, for tests performed by a qualified testing agency.
- C. Evaluation Reports: For linear-metal-ceiling framing systems.
- D. Field quality-control reports.

1.6 CLOSEOUT SUBMITTALS

- A. Maintenance Data: For finishes to include in maintenance manuals.

1.7 MAINTENANCE MATERIAL SUBMITTALS

- A. Furnish extra materials that match products installed and that are packaged with protective covering for storage and identified with labels describing contents.
 - 1. Linear-Metal-Ceiling Components: Quantity of each pan, carrier, accessory, and exposed molding and trim equal to 2 percent of quantity installed.

1.8 QUALITY ASSURANCE

- A. Testing Agency Qualifications: Accredited by National Voluntary Laboratory Accreditation Program for testing indicated.
- B. All ceiling components are to be products of one manufacturer.
- C. Mockups: Build mockups to verify selections made under Sample submittals and to demonstrate aesthetic effects and to set quality standards for materials and execution.
 - 1. Build mockup of each type of linear metal ceiling as shown on Drawings.

2. Approval of mockups does not constitute approval of deviations from the Contract Documents contained in mockups unless Architect specifically approves such deviations in writing.
3. Subject to compliance with requirements, approved mockups may become part of the completed Work if undisturbed at time of Substantial Completion.

1.9 DELIVERY, STORAGE, AND HANDLING

- A. Deliver ceiling components and accessories to Project site in original, unopened packages and store them in a fully enclosed, conditioned space where they are protected against damage from moisture, humidity, temperature extremes, direct sunlight, surface contamination, and other causes.
- B. Handle ceiling components and accessories in a manner that prevents damage.

1.10 PROJECT CONDITIONS

- A. Environmental Limitations: Do not install interior ceilings until spaces are enclosed and weathertight, wet-work in spaces is complete and dry, work above ceilings is complete, and HVAC system is operating and maintaining temperature and relative humidity at levels planned for building occupants during the remainder of the construction period.

PART 2 - PRODUCTS

2.1 PERFORMANCE REQUIREMENTS

- A. Delegated Design: Engage a qualified professional engineer, as defined in Section 014000 "Quality Requirements" to design attachment devices.

2.2 LINEAR METAL CEILINGS

- A. Pans and Suspension System:
 1. Manufacturers: Subject to compliance with requirements, provide products by Armstrong World Industries or comparable systems of one of the following:
 - a. Rockfon; ROCKWOOL International.
 - b. USG Corporation.
- B. Metal Pans: Complying with ASTM E1264 and formed to snap on to carriers securely, without separate fasteners.
 1. Surface-Burning Characteristics: For metal-pan assemblies, including backings, determined by testing in accordance with ASTM E84 by a qualified testing agency. Identify products with appropriate markings of applicable testing agency.

Curbside Exterior Improvements
West Virginia International Yeager Airport (CRW)
Charleston, West Virginia

- a. Flame-Spread Index: 25 or less.
 - b. Smoke-Developed Index: 50 or less.
2. Metal: Electrolytic zinc-coated steel sheet, ASTM A879/A879M, 04Z (12G) coating; surface treatment as recommended by finish manufacturer for type of use and painted finish indicated .
 3. Form: Nonperforated.
 4. Noise Reduction Coefficient (NRC) Rating: Not less than 0.70 when tested in accordance with ASTM C423.
 5. Backing: Manufacturer's standard to provide NRC rating indicated for perforation pattern indicated .
 6. Pan Thickness: Not less than 0.028 inch .
 7. Pan Size: 6 inches x 96 inches.
 8. Metal-Pan Finish: Protected on exposed surfaces from damage by applying a strippable, temporary protective covering before shipping and as follows:
 - a. Wood-Veneer Finish: MetalWorks Linear/La Holla Oak/6" x 96".
- C. Pan Splices: Formed for snap fit into butt-cut pans, 8 to 12 inches long.
1. Finish: Matching pan.
- D. End Caps: Manufacturer's standard material fabricated to fit and conceal exposed ends of pans.
1. Finish: Matching pan.
- E. Filler Strips: Manufacturer's standard, fabricated to close voids between pans.
1. Type: Recessed
 2. Finish: Matching pan.
- F. Moldings and Trim: Manufacturer's standard for exposed members, to conceal edges of penetrations through ceiling, to conceal ends of pans and carriers, for fixture trim and adapters, for fasciae at changes in ceiling height, and for other conditions; of metal and finish matching linear metal pans or extruded plastic unless otherwise indicated.
1. For Circular Penetrations of Ceiling: Fabricate edge moldings to diameter required to fit penetration exactly.
- G. Carrier Suspension System: Manufacturer's standard complying with requirements in ASTM C635/C635M for applications indicated; complete with carriers, splice sections, stabilizing components, connector clips, alignment clips, leveling clips, hangers, molding, trim, retention clips, load-resisting struts, fixture adapters, and other suspension components required to support ceiling units and other ceiling-supported construction.
1. Material: ASTM A653/A653M, hot-dip galvanized, cold-rolled sheet steel, G60 coating designation or ASTM A879/A879M, electrolytic zinc-coated, cold-rolled steel, 08Z (24G) coating designation .
 2. Structural Classification: Heavy-duty system.

3. Adaptable Carriers: Manufacturer's standard carriers for direct attachment to existing suspended tees.
4. Flexible Radial Carriers: Manufacturer's standard radial carriers.
5. Expansion Carriers: Manufacturer's standard carriers allowing for irregularities or other unusual space conditions.
6. Stabilizer Channels, Tees, and Bars: Manufacturer's standard components for stabilizing main carriers.
7. Carrier Splices: Same metal, profile, and finish as for carriers.
8. Hold-Down Clips: Manufacturer's standard hold-down clips spaced as standard with manufacturer.

2.3 CARRIER-SYSTEM HANGERS, BRACES, AND TIES

- A. Attachment Devices: Size for 5 times the design load indicated in ASTM C635/C635M, Table 1, Direct Hung, unless otherwise indicated.
- B. Wire Hangers, Braces, and Ties: Provide wire complying with the following requirements:
 1. Zinc-Coated, Carbon-Steel Wire: ASTM A641/A641M, Class 1 zinc coating, soft temper.
 2. Stainless Steel Wire: ASTM A580/A580M, Type 304, nonmagnetic.
 3. Nickel-Copper-Alloy Wire: ASTM B164, nickel-copper-alloy UNS No. N04400.
 4. Size: Select wire diameter so its stress at 3 times the hanger design load indicated in ASTM C635/C635M, Table 1, Direct Hung is less than yield stress of wire, but provides not less than 0.135-inch- diameter wire.
- C. Rods and Flat Hangers: Mild steel, zinc coated or protected with rust-inhibitive paint.
- D. Angle Hangers: Angles with legs not less than 7/8 inch wide; formed from 0.04-inch- thick, galvanized-steel sheet complying with ASTM A653/A653M, G90 coating designation; with bolted connections and 5/16-inch- diameter bolts.
- E. Seismic Struts: Suspension-system manufacturer's standard compression struts designed to accommodate seismic forces.
- F. Exterior Bracing: Cold-rolled steel channels and angles, hot-dip galvanized to comply with ASTM A653/A653M, G60 coating designation; size and profile as required to withstand wind load.

2.4 ACCESSORIES

- A. Access Panels: For access at locations indicated, provide door hinge assembly, retainer clip, and retainer bar, assembled with ceiling panels and carrier sections into access doors permitting upward or downward opening.
 1. Size: 24 inches square or as indicated.
- B. Air-Distribution Devices: Where indicated on Drawings, provide independently suspended air-distribution devices that are relocatable and adjustable from below finished ceiling, that do not interrupt ceiling components, and that are fully concealed by and integrated with ceiling system.

PART 3 - EXECUTION

3.1 EXAMINATION

- A. Examine substrates, areas, and conditions, including structural framing and substrates to which linear metal ceilings attach or abut, with Installer present, for compliance with requirements specified in this and other Sections that affect ceiling installation and anchorage and with requirements for installation tolerances and other conditions affecting performance of linear metal ceilings.
- B. Proceed with installation only after unsatisfactory conditions have been corrected.

3.2 PREPARATION

- A. Measure each ceiling area and establish layout of linear metal pans.
 - 1. Balance border widths at opposite edges of each ceiling.
 - 2. Avoid using less-than-half-width pans at borders.

3.3 INSTALLATION OF LINEAR METAL CEILINGS

- A. Comply with ASTM C636/C636M and seismic requirement indicated, in accordance with manufacturer's written instructions and CISCA's "Ceiling Systems Handbook."
- B. Suspend ceiling hangers from building's structural members and as follows:
 - 1. Install hangers plumb and free from contact with insulation or other objects within ceiling plenum that are not part of supporting structure or of ceiling suspension system.
 - 2. Splay hangers only where required to miss obstructions; offset resulting horizontal forces by bracing, countersplaying, or other equally effective means.
 - 3. Where width of ducts and other construction within ceiling plenum produces hanger spacings that interfere with location of hangers at spacings required to support standard suspension-system members, install supplemental suspension members and hangers in form of trapezes or equivalent devices.
 - 4. Secure wire hangers to ceiling suspension members and to supports above with a minimum of three tight turns in 3 inches. Connect hangers directly either to structures or to inserts, eye screws, or other devices that are secure and appropriate for substrate to which hangers are attached and for type of hanger involved.
 - 5. Secure flat, angle, channel, and rod hangers to structure, including intermediate framing members, by attaching to inserts, eye screws, or other devices that are secure and appropriate for both structure to which hangers are attached and type of hanger involved. Install hangers in a manner that does not cause them to deteriorate or fail due to age, corrosion, or elevated temperatures.
 - 6. Do not support ceilings directly from permanent metal forms or floor deck. Fasten hangers to cast-in-place hanger inserts[, **power-actuated fasteners,**] or postinstalled mechanical or adhesive anchors that extend through forms into concrete.
 - 7. When steel framing does not permit installation of hanger wires at spacing required, install carrying channels or other supplemental support for attachment of hanger wires.

Curbside Exterior Improvements
West Virginia International Yeager Airport (CRW)
Charleston, West Virginia

8. Do not attach hangers to steel deck tabs.
 9. Do not attach hangers to steel roof deck. Attach hangers to structural members.
 10. Space hangers not more than 48 inches o.c. along each member supported directly from hangers unless otherwise indicated; provide hangers not more than 8 inches from ends of each member.
 11. Size supplemental suspension members and hangers to support ceiling loads within performance limits established by referenced standards and publications.
- C. Secure bracing wires to ceiling suspension members and to supports with a minimum of four tight turns in 1-1/2 inches. Suspend bracing from building's structural members as required for hangers and without attaching to permanent metal forms, steel deck, or steel deck tabs. Fasten bracing wires into concrete with cast-in-place or postinstalled anchors.
- D. Install edge moldings and trim at perimeter of linear metal ceiling area and where necessary to conceal edges and ends of linear metal pans.
1. Screw attach moldings to substrate at intervals of not more than 16 inches o.c. and not more than 3 inches from ends, leveling with ceiling suspension system to a tolerance of 1/8 inch in 12 feet. Miter corners accurately and connect securely.
 2. Do not use exposed fasteners, including pop rivets, on moldings and trim.
- E. Install suspension-system carriers so they are aligned and securely interlocked with one another.
1. Install stabilizer channels, tees, and bars at regular intervals to stabilize carriers and at light fixtures, air-distribution equipment, access doors, and other equipment; spaced as standard with manufacturer for use indicated.
 2. Remove and replace dented, bent, or kinked members.
- F. Cut linear metal pans for accurate fit at borders and at interruptions and penetrations by other work through ceilings. Stiffen edges of cut units as required to eliminate evidence of buckling or variations in flatness.
- G. Install linear metal pans in coordination with suspension system and exposed moldings and trim.
1. Align joints in adjacent courses to form uniform, straight joints parallel to room axis in both directions unless otherwise indicated on Drawings.
 2. Fit adjoining units to form flush, tight joints. Scribe and cut units for accurate fit at borders and around construction penetrating ceiling.
 - a. Install pans with butt joints staggered a minimum of 12 inches using internal pan splices.
 3. Install directionally textured or patterned metal pans in directions indicated.
 4. Where metal pan ends are visible, install end caps unless trim is indicated.
 5. Install filler strips where indicated on Drawings.
- H. Install hold-down clips where indicated.

3.4 FIELD QUALITY CONTROL

- A. Special Inspections: Engage a qualified special inspector to perform the following special inspections:
 - 1. Suspended ceiling system.
 - 2. Hangers, anchors, and fasteners.
- B. Testing Agency: Engage a qualified testing agency to perform tests and inspections.
- C. Tests and Inspections: Testing and inspecting of completed installations of linear metal ceiling hangers, anchors, and fasteners to take place in successive stages, in test areas and using methods as follows. Do not proceed with installations of linear metal ceiling hangers for the next area until test results for previously completed installations show compliance with requirements.
 - 1. Test Areas: Test installation of ceiling suspension systems on each floor when installation has reached 20 percent completion but before pans have been installed.
 - a. Within each test area, testing agency will select one of every 10 power-actuated fasteners and postinstalled anchors used to attach hangers to concrete and will test them for 200 lbf of tension; it will also select one of every two postinstalled anchors used to attach bracing wires to concrete and will test them for 440 lbf of tension.
 - b. When testing discovers fasteners and anchors that do not comply with requirements, testing agency will test those anchors not previously tested until 20 pass consecutively and then will resume initial testing frequency.
- D. Linear metal ceiling hangers, anchors, and fasteners will be considered defective if they do not pass tests and inspections.
- E. Prepare test and inspection reports.

3.5 CLEANING

- A. Clean exposed surfaces of linear metal ceilings, including trim and edge moldings, after removing strippable, temporary protective covering if any. Comply with manufacturer's written instructions for stripping of temporary protective covering, cleaning, and touchup of minor finish damage. Remove and replace ceiling components that cannot be successfully cleaned and repaired to permanently eliminate evidence of damage, including dented and bent units.

END OF SECTION

SECTION 074213.23 - METAL COMPOSITE MATERIAL WALL PANELS

PART 1 - GENERAL

1.1 RELATED DOCUMENTS

- A. Drawings and general provisions of the Contract, including General and Supplementary Conditions and Division 01 Specification Sections, apply to this Section.

1.2 SUMMARY

- A. Section includes MCM rainscreen wall panels.

1.3 DEFINITIONS

- A. DBVR: Drained and back-ventilated rainscreen system; rainscreen system designed to drain and dry cavity entering water through drainage channels, weeps, and air ventilation.
- B. MCM: MCM; cladding material formed by joining two thin metal skins to polyethylene or fire-retardant core and bonded under precise temperature, pressure, and tension.

1.4 PREINSTALLATION MEETINGS

- A. Preinstallation Conference: Conduct conference at Project site.
 - 1. Meet with Owner, Architect, Owner's insurer if applicable, MCM panel Fabricator and Installer, MCM sheet manufacturer's representative, structural-support Installer, and installers whose work interfaces with or affects MCM panels, including installers of doors, windows, and louvers.
 - 2. Review and finalize construction schedule and verify availability of materials, Installer's personnel, equipment, and facilities needed to make progress and avoid delays.
 - 3. Examine support conditions for compliance with requirements, including alignment between and attachment to structural members.
 - 4. Review flashings, special siding details, wall penetrations, openings, and condition of other construction that affect MCM panels.
 - 5. Review governing regulations and requirements for insurance, certificates, and tests and inspections if applicable.
 - 6. Review temporary protection requirements for MCM panel assembly during and after installation.
 - 7. Review procedures for repair of panels damaged after installation.
 - 8. Document proceedings, including corrective measures and actions required, and furnish copy of record to each participant.

1.5 ACTION SUBMITTALS

- A. Product Data: For each type of product.
 - 1. Include construction details, material descriptions, dimensions of individual components and profiles, and finishes for each type of panel and accessory.
- B. Shop Drawings:
 - 1. Include fabrication and installation layouts of MCM panels; details of edge conditions, joints, panel profiles, corners, anchorages, attachment assembly, trim, flashings, closures, and accessories; and special details.
 - 2. Accessories: Include details of the flashing, trim and anchorage, at a scale of not less than 1-1/2 inches per 12 inches (1:10).
- C. Samples for Initial Selection: For each type of MCM panel indicated with factory-applied color finishes.
 - 1. Include similar Samples of trim and accessories involving color selection.
- D. Samples for Verification: For each type of exposed finish required, prepared on Samples of size indicated below.
 - 1. MCM Panels: 12 inches (305 mm) long by actual panel width. Include fasteners, closures, and other MCM panel accessories. Submit custom color samples in paint manufacturer's standard size.

1.6 INFORMATIONAL SUBMITTALS

- A. Qualification Data: For Installer.
- B. Product Test Reports: For each product, tests performed by a qualified testing agency.
 - 1. MCM Manufacturer's Material Test Reports: Certified test reports showing compliance with specific performance or third-party listing documenting compliance to comparable code sections IBC 1407.14 and IBC 1703.5.
 - 2. MCM System Fabricator's Certified System Tests Reports: Certified system test reports showing system compliance with specific performance or third-party listing documenting compliance code section. Base performance requirements on MCM system type provided.
 - a. DBVR System: Tested to AAMA 509.
- C. Field quality-control reports.
- D. Sample Warranties: For special warranties.

1.7 CLOSEOUT SUBMITTALS

- A. Maintenance Data: For MCM panels to include in maintenance manuals.

1.8 QUALITY ASSURANCE

- A. Installer Qualifications: An entity that employs installers and supervisors who are trained and approved by MCM Fabricator.
- B. Mockups: Build mockups to verify selections made under Sample submittals and to demonstrate aesthetic effects and set quality standards for MCM fabrication and installation.
 - 1. Build mockup of typical MCM panel assembly with minimum area of 8 feet x 8 feet where directed by Architect, including corner, supports, attachments, and accessories.
 - 2. Water-Spray Test: Conduct water-spray test of mockup of MCM panel assembly, testing for water penetration in accordance with AAMA 501.2.
 - 3. Approval of mockups does not constitute approval of deviations from the Contract Documents contained in mockups unless Architect specifically approves such deviations in writing.
 - 4. Subject to compliance with requirements, approved mockups may become part of the completed Work if undisturbed at time of Substantial Completion.

1.9 DELIVERY, STORAGE, AND HANDLING

- A. Deliver components, MCM panels, and other manufactured items so as not to be damaged or deformed. Package MCM panels for protection during transportation and handling.
- B. Unload, store, and erect MCM panels in a manner to prevent bending, warping, twisting, and surface damage.
- C. Stack MCM panels on platforms or pallets, covered with suitable weathertight and ventilated covering. Store MCM panels to ensure dryness, with positive slope for drainage of water. Do not store MCM panels in contact with other materials that might cause staining, denting, or other surface damage.
- D. Retain strippable protective covering on MCM panels during installation.

1.10 FIELD CONDITIONS

- A. Weather Limitations: Proceed with installation only when existing and forecasted weather conditions permit assembly of MCM panels to be performed in accordance with manufacturers' written instructions and warranty requirements.

1.11 COORDINATION

- A. Coordinate MCM panel installation with rain drainage work, flashing, trim, construction of soffits, and other adjoining work to provide a leakproof, secure, and noncorrosive installation.

1.12 WARRANTY

- A. Warranty on Panel Material: Manufacturer's standard form in which manufacturer agrees to replace MCM that fails within specified warranty period.
 - 1. Warranty Period: Five years from date of Substantial Completion.
- B. Special Warranty on Panel Finishes: Manufacturer's standard form in which manufacturer agrees to repair finish or replace MCM panels that show evidence of deterioration of factory-applied finishes within specified warranty period.
 - 1. Finish Warranty Period: 20 years from date of Substantial Completion.

PART 2 - PRODUCTS

2.1 PERFORMANCE REQUIREMENTS

- A. Structural Performance: Provide MCM panel systems capable of withstanding the effects of the following loads, based on testing in accordance with ASTM E330:
- B. Structural Loads:
 - 1. Wind Loads: As indicated on Drawings.
 - a. Basic Wind Speed: 90 mph.
 - b. Importance Factor: 1.15.
 - c. Exposure Category: B.
 - 2. Panel Deflection Limit: For wind loads, no greater than 1/60 of the span.
 - 3. Framing Member Deflection Limits: For wind loads, no greater than 1/240 or of the span.
- C. Air Infiltration: Air leakage of not more than 0.06 cfm/sq. ft. (0.3 L/s per sq. m) of wall area when tested in accordance with ASTM E283 at the following test-pressure difference:
 - 1. Test-Pressure Difference: 6.24 lbf/sq. ft. (300 Pa).
- D. Water Penetration under Static Pressure: No water penetration to room side of assembly when tested for 15 minutes in accordance with ASTM E331 at the following test-pressure difference:
 - 1. Test-Pressure Difference: 6.24 lbf/sq. ft. (300 Pa).
- E. Thermal Movements: Locate expansion and contraction points to allow for free and noiseless thermal movements from surface temperature changes.
 - 1. Temperature Change (Range): minus 20 deg F to 180 deg F (minus 29 to 82.2 deg C), material surfaces.
- F. Fire Propagation Characteristics: MCM wall assembly passes NFPA 285 testing.

2.2 MCM WALL PANELS

- A. MCM Wall Panel Systems: Provide factory-formed and -assembled, MCM wall panels fabricated from two metal facings that are bonded to a solid, extruded thermoplastic core; formed into profile for installation method indicated. Include attachment assembly components, panel stiffeners, and accessories required for weathertight system.
1. Basis-of-Design Product: Subject to compliance with requirements, provide ALUCOBOND®; 3A Composites USA Inc.; ALUCOBOND® PLUS or comparable product by:
 - a. Arconic Architectural Products (USA).
 - b. Mitsubishi Chemical Composites.
 - c. Citadel.
- B. Aluminum-Faced Composite Wall Panels: Formed with 0.020-inch- (0.50-mm-) thick, coil-coated aluminum sheet facings.
1. Panel Thickness:
 - a. Field Panels: 4 mm.
 - b. Accent Panels: 6 mm.
 2. Core: Fire retardant.
 3. Exterior Finish: PVDF fluoropolymer.
 - a. MCM-1 – Brilliant Silver Metallic
 - b. MCM-2 – Cadet Gray
 - c. MCM-3 – MZG Gray Mica II
 - d. MCM-4 – Pure White
 4. Peel Strength: 22.5 in-lb/in. (100 N x mm/mm) when tested for bond integrity in accordance with ASTM D1781.
 5. Fire Performance: Flame spread less than 25 and smoke developed less than 450, in accordance with ASTM E84.
- C. Attachment Assembly Components: Formed from extruded aluminum or manufacturer's material compatible with panel facing.

2.3 MISCELLANEOUS MATERIALS

- A. Miscellaneous Metal Subframing and Furring: ASTM C645, cold-formed, metallic-coated steel sheet ASTM A653/A653M, G90 (Z275 hot-dip galvanized) coating designation or ASTM A792/A792M, Class AZ50 (Class AZM150) aluminum-zinc-alloy coating designation unless otherwise indicated. Provide Fabricator's standard sections as required for support and alignment of MCM panel system.
- B. Panel Accessories: Provide components required for a complete, weathertight panel system including trim, copings, fasciae, mullions, sills, corner units, clips, flashings, sealants, gaskets,

fillers, closure strips, and similar items. Match material and finish of MCM panels unless otherwise indicated.

- C. Flashing and Trim: Provide flashing and trim formed from same material as MCM panels as required to seal against weather and to provide finished appearance. Locations include, but are not limited to, bases, drips, sills, jambs, corners, end walls, framed openings, rakes, fasciae, parapet caps, soffits, reveals, and fillers. Finish flashing and trim with same finish system as adjacent MCM panels.
 - 1. Basis-of-Design Product: Subject to compliance with requirements, provide ALUCOBOND®; 3A Composites USA Inc.; ALUCOBOND® Axcent™ Trim or comparable product by one of the following:
 - a. Arconic Architectural Products (USA).
 - b. Mitsubishi Chemical Composites.
 - 2. Aluminum Trim: Formed with 0.040-inch (1.00-mm-) thick, coil-coated aluminum sheet facings.
 - 3. Color: As selected by Architect from manufacturer's full and premium range of finishes.
- D. Panel Fasteners: Self-tapping screws designed to withstand design loads. Provide exposed fasteners with heads matching color of MCM panels by means of plastic caps or factory-applied coating. Provide EPDM or PVC sealing washers for exposed fasteners.
- E. Panel Sealants: ASTM C920; elastomeric polyurethane or silicone sealant; of type, grade, class, and use classifications required to seal joints in MCM panels and remain weathertight; and as recommended in writing by MCM panel manufacturer.

2.4 FABRICATION

- A. General: Fabricate and finish MCM panels and accessories at the factory, by manufacturer's standard procedures and processes, as necessary to fulfill indicated performance requirements demonstrated by laboratory testing. Comply with indicated profiles and with dimensional and structural requirements.
- B. Fabricate MCM panel joints with factory-installed captive gaskets or separator strips that provide a weathertight seal and prevent metal-to-metal contact, and that minimize noise from movements.
- C. Sheet Metal Flashing and Trim: Fabricate flashing and trim to comply with manufacturer's recommendations or recommendations in SMACNA's "Architectural Sheet Metal Manual" that apply to design, dimensions, metal, and other characteristics of item indicated.
 - 1. Form exposed sheet metal accessories that are without excessive oil canning, buckling, and tool marks and that are true to line and levels indicated, with exposed edges folded back to form hems.
 - 2. Seams for Aluminum: Fabricate nonmoving seams with flat-lock seams. Form seams and seal with epoxy seam sealer. Rivet joints for additional strength.
 - 3. Sealed Joints: Form non-expansion, but movable, joints in metal to accommodate sealant and to comply with SMACNA standards.

4. Conceal fasteners and expansion provisions where possible. Exposed fasteners are not allowed on faces of accessories exposed to view.
5. Fabricate cleats and attachment devices from same material as accessory being anchored or from compatible, noncorrosive metal recommended in writing by metal panel manufacturer.
 - a. Size: As recommended by SMACNA's "Architectural Sheet Metal Manual" or metal wall panel manufacturer for application but not less than thickness of metal being secured.

2.5 FINISHES

- A. Protect mechanical and painted finishes on exposed surfaces from damage by applying a strippable, temporary protective covering before shipping.
- B. Appearance of Finished Work: Variations in appearance of abutting or adjacent pieces are acceptable if they are within one-half of the range of approved Samples. Noticeable variations in same piece are not acceptable. Variations in appearance of other components are acceptable if they are within the range of approved Samples and are assembled or installed to minimize contrast.
- C. Aluminum Panels and Accessories:
 1. PVDF Fluoropolymer: AAMA 2605. Fluoropolymer finish containing not less than 70 percent PVDF resin by weight in color coat. Prepare, pretreat, and apply coating to exposed metal surfaces to comply with coating and resin manufacturers' written instructions.

PART 3 - EXECUTION

3.1 EXAMINATION

- A. Examine substrates, areas, and conditions, with Installer present, for compliance with requirements for installation tolerances, MCM panel supports, and other conditions affecting performance of the Work.
 1. Examine wall framing to verify that girts, angles, channels, studs, and other structural panel support members and anchorage have been installed within alignment tolerances required by MCM wall panel manufacturer.
 2. Examine wall sheathing to verify that sheathing joints are supported by framing or blocking and that installation is within flatness tolerances required by MCM wall panel manufacturer.
 - a. Verify that air- or water-resistive barriers have been installed over sheathing or backing substrate to prevent air infiltration or water penetration.
- B. Examine roughing-in for components and assemblies penetrating MCM panels to verify actual locations of penetrations relative to seam locations of MCM panels before installation.

- C. Proceed with installation only after unsatisfactory conditions have been corrected.

3.2 PREPARATION

- A. Miscellaneous Supports: Install sub-framing, furring, and other miscellaneous panel support members and anchorages in accordance with ASTM C754 and MCM panel manufacturer's written recommendations.

3.3 MCM PANEL INSTALLATION

- A. General: Install MCM panels in accordance with Fabricator's written instructions in orientation, sizes, and locations indicated on Drawings. Install panels perpendicular to supports unless otherwise indicated. Anchor MCM panels and other components of the Work securely in place, with provisions for thermal and structural movement.

1. Shim or otherwise plumb substrates receiving MCM panels.
2. Flash MCM panels at perimeter of all openings. Fasten with self-tapping screws. Do not begin installation until air- or water-resistive barriers and flashings that will be concealed by MCM panels are installed.
3. Install screw fasteners in predrilled holes.
4. Locate and space fastenings in uniform vertical and horizontal alignment.
5. Install flashing and trim as MCM panel work proceeds.
6. Locate panel splices over, but not attached to, structural supports. Stagger panel splices and end laps to avoid a four-panel lap splice condition.
7. Align bottoms of MCM panels and fasten with blind rivets, bolts, or self-tapping screws. Fasten flashings and trim around openings and similar elements with self-tapping screws.
8. Provide weathertight escutcheons for pipe- and conduit-penetrating panels.

- B. Fasteners:

1. Aluminum Panels: Use aluminum or stainless steel fasteners for surfaces exposed to the exterior; use aluminum or galvanized-steel fasteners for surfaces exposed to the interior.

- C. Metal Protection: Where dissimilar metals contact each other or corrosive substrates, protect against galvanic action as recommended in writing by MCM panel manufacturer.

- D. Attachment Assembly, General: Install attachment assembly required to support MCM wall panels and to provide a complete weathertight wall system, including subgirts, perimeter extrusions, tracks, drainage channels, panel clips, and anchor channels.

1. Include attachment to supports, panel-to-panel joinery, panel-to-dissimilar-material joinery, and panel-system joint seals.

- E. Panel Installation: Attach MCM wall panels to supports at locations, spacings, and with fasteners recommended by Fabricator to achieve performance requirements specified.

1. DBVR System: Install using Fabricator's standard assembly with vertical channel that provides support and secondary drainage assembly, draining at base of wall. Notch vertical channel to receive support pins. Install vertical channels supported by channel brackets or adjuster angles and at locations, spacings, and with fasteners recommended

by Fabricator. Attach MCM wall panels by inserting horizontal support pins into notches in vertical channels and into flanges of panels. Leave horizontal and vertical joints with open reveal.

- a. Track-Support Installation: Install support assembly at locations, spacings, and with fasteners recommended by manufacturer. Use Fabricator's standard horizontal tracks and vertical drain channels that provide support and secondary drainage assembly, draining to the exterior at horizontal joints through drain tube. Attach MCM wall panels to tracks by interlocking panel edges with Fabricator's standard "T" clips.
 - b. Panel Installation:
 - 1) Attach routed-and-turned flanges of wall panels to perimeter extrusions with manufacturer's standard fasteners.
 - 2) Install wall panels to allow individual panels to "free float" and be installed and removed without disturbing adjacent panels.
 - c. Joint Sealing: Do not apply sealants to joints unless otherwise indicated.
- F. Accessory Installation: Install accessories with positive anchorage to building and weathertight mounting, and provide for thermal expansion. Coordinate installation with flashings and other components.
1. Install components required for a complete MCM panel assembly including trim, copings, corners, seam covers, flashings, sealants, gaskets, fillers, closure strips, and similar items. Provide types indicated by MCM panel Fabricator; or, if not indicated, provide types recommended in writing by MCM system Fabricator.
- G. Flashing and Trim: Comply with performance requirements, manufacturer's written installation instructions, or SMACNA's "Architectural Sheet Metal Manual." Provide concealed fasteners where possible, and set units true to line and level as indicated. Install work with laps, joints, and seams that are permanently watertight.
1. Install exposed flashing and trim that is without buckling and tool marks and that is true to line and levels indicated, with exposed edges folded back to form hems. Install sheet metal flashing and trim to fit substrates and to result in waterproof performance.
 2. Expansion Provisions: Provide for thermal expansion of exposed flashing and trim. Space movement joints at a maximum of 10 feet (3 m) with no joints allowed within 24 inches (605 mm) of corner or intersection. Where lapped expansion provisions cannot be used or would not be sufficiently waterproof, form expansion joints of intermeshing hooked flanges, not less than 1 inch (25 mm) deep, filled with mastic sealant (concealed within joints).

3.4 ERECTION TOLERANCES

A. Site Verifications of Conditions:

1. Verify conditions of substrate previously installed under other Sections are acceptable for the MCM system installation. Provide documentation indicating detrimental conditions to the MCM system performance.
2. Once conditions are verified, MCM system installation tolerances are as follows:

- a. Shim and align MCM wall panel units within installed tolerance of 1/4 inch in 20 feet (6 mm in 6 m), non-accumulative, on level, plumb, and location lines as indicated, and within 1/8-inch (3-mm) offset of adjoining faces and of alignment of matching profiles.

3.5 FIELD QUALITY CONTROL

- A. Water-Spray Test: After installation, test area of assembly as directed by Architect for water penetration in accordance with AAMA 501.2.
- B. Fabricator's Field Service: Engage a factory-authorized service representative to test and inspect completed MCM wall panel installation, including accessories.
- C. MCM wall panels will be considered defective if they do not pass test and inspections.
- D. Additional tests and inspections, at Contractor's expense, are performed to determine compliance of replaced or additional work with specified requirements.
- E. Prepare test and inspection reports.

3.6 CLEANING AND PROTECTION

- A. Remove temporary protective coverings and strippable films, if any, as MCM panels are installed, unless otherwise indicated in manufacturer's written installation instructions. On completion of MCM panel installation, clean finished surfaces as recommended by MCM panel manufacturer. Maintain in a clean condition during construction.
- B. After MCM panel installation, clear weep holes and drainage channels of obstructions, dirt, and sealant.
- C. Replace MCM panels that have been damaged or have deteriorated beyond successful repair by finish touchup or similar minor repair procedures.

END OF SECTION

SECTION 323300 - SITE FURNISHINGS

PART 1 - GENERAL

1.1 RELATED DOCUMENTS

- A. Drawings and general provisions of the Contract, including General and Supplementary Conditions and Division 01 Specification Sections, apply to this Section.

1.2 SUMMARY

- A. Section Includes:

1. Bollards.
2. Hardscape bench
3. Waste receptacles
4. Furniture Bench.

- B. Related Requirements:

1. Section 033053 "Miscellaneous Cast-in-Place Concrete" for installing pipe sleeves cast in concrete footings.

1.3 ACTION SUBMITTALS

- A. Product Data: For each type of product.
- B. Samples for Initial Selection: For units with factory-applied finishes.
- C. Samples for Verification: For each type of exposed finish, not less than 6-inch- long linear components and 4-inch- square sheet components.

1.4 INFORMATIONAL SUBMITTALS

- A. Material Certificates: For site furnishings manufactured with preservative-treated wood.
- B. Warranty.

1.5 CLOSEOUT SUBMITTALS

- A. Maintenance Data: For site furnishings to include in maintenance manuals.

1.6 QUALITY ASSURANCE

- A. Manufacturers shall have a minimum of five years' experience producing comparable site furnishings.
- B. All products shall be durable, low-maintenance, and suitable for public-use airport environments.
- C. Products shall comply with FAA AIP Buy American preferences unless a waiver has been granted. Submit certification before procurement.

PART 2 - PRODUCTS

2.1 BOLLARDS—

- A. Basis of Design: Wausau Tile TF6067 Precast Concrete Bollard with Beveled Top.
- B. Acceptable Manufacturers:
 - 1. Ameron Pole Products (NOV).
 - 2. Nitterhouse Masonry Products.
 - 3. Forms + Surfaces.
- C. Characteristics:
 - 1. Precast concrete with beveled top, approximately 36 inches high x 12 inches in diameter.
 - 2. 5,000 psi compressive strength, air-entrained concrete as per ASTM C260.
 - 3. Hot Dip galvanized reinforcement as per ASTM A123.
 - 4. Integral color concrete; exposed aggregate or sandblast finish.
 - 5. Embedded installation as per Drawings.

2.2 HARDSCAPE BENCHES

- A. Basis-of-Design: Landscape Forms Q2-SHR-96B-L “Shear” Bench, French Gray finish (final color by Architect), or equal.
- B. Acceptable Manufacturers:
 - 1. Ameron Pole Products (NOV)
 - 2. Nitterhouse Masonry Products
 - 3. Forms + Surfaces
- C. Salient Characteristics:
 - 1. Approx. 96 in long, 17–18 in seat height, 20–24 in deep.
 - 2. Aluminum or powder-coated steel seat and frame, 11 ga min.
 - 3. Factory-applied powder-coat, color French Gray or as selected.

4. Surface-mounted with concealed anchor plates.
5. Load capacity 600 lb without permanent deformation.

2.3 WASTE RECEPTACLES

- A. Basis-of-Design: Forms + Surfaces Apex Receptacle – 24 Gallon, Rain Cover, Standard Lift Latch, Freestanding with Levelers, Cumaru Hardwood Panels
- B. Acceptable Manufacturers:
 1. Landscape Forms
 2. Victor Stanley
 3. Maglin Site Furniture
- C. Salient Characteristics:
 1. 24-gallon capacity with rigid liner and rain cover.
 2. Cumaru hardwood or equal dense hardwood panels.
 3. Powder-coated aluminum or stainless frame, color black.
 4. Lift-latch access, freestanding base with levelers.
 5. Corrosion and UV-resistant finishes meeting ASTM standards.

2.4 FURNITURE BENCHES

- A. Basis-of-Design: Forms + Surfaces – Boardwalk Bench, Surface Mount, No Divider
- B. Acceptable Manufacturers:
 1. Maglin Site Furniture – 'MLB720' Wood Slat Bench.
 2. Landscape Forms – 'Take-Form' or 'Presidio' Benches.
- C. Salient Characteristics:
 1. Length approx. 72–96 in, seat height 17–18 in, depth 20–24 in.
 2. Seat and backrest: Cumaru hardwood slats, FSC-certified or equal durable tropical hardwood.
 3. Frame: Powder-coated aluminum or stainless steel, color black.
 4. Mounting: Surface-mounted with concealed anchor plates compatible with concrete paving.
 5. Configuration: Continuous bench without divider arms; ergonomic backrest angle.
 6. Finish: Factory-applied thermoset powder-coat meeting ASTM D3363 hardness > H, ASTM B117 salt-spray $\geq 1,000$ hours, ASTM D2244 $\Delta E \leq 2$ after 1,000 hours QUV.
 7. Performance: Corrosion- and UV-resistant construction suitable for public exterior airport environments.

D.

2.5 MATERIALS

- A. Aluminum: Alloy and temper recommended by aluminum producer and finisher for type of use and finish indicated; free of surface blemishes and complying with the following:
1. Rolled or Cold-Finished Bars, Rods, and Wire: ASTM B211.
 2. Extruded Bars, Rods, Wire, Profiles, and Tubes: ASTM B221.
 3. Structural Pipe and Tube: ASTM B429/B429M.
 4. Sheet and Plate: ASTM B209.
 5. Castings: ASTM B26/B26M.
- B. Steel and Iron: Free of surface blemishes and complying with the following:
1. Plates, Shapes, and Bars: ASTM A36/A36M.
 2. Steel Pipe: Standard-weight steel pipe complying with ASTM A53/A53M, or electric-resistance-welded pipe complying with ASTM A135/A135M.
 3. Tubing: Cold-formed steel tubing complying with ASTM A500/A500M.
 4. Mechanical Tubing: Cold-rolled, electric-resistance-welded carbon or alloy steel tubing complying with ASTM A513/A513M, or steel tubing fabricated from steel complying with ASTM A1011/A1011M and complying with dimensional tolerances in ASTM A500/A500M; zinc coated internally and externally.
 5. Sheet: Commercial steel sheet complying with ASTM A1011/A1011M.
 6. Malleable-Iron Castings: ASTM A47/A47M, grade as recommended by fabricator for type of use intended.
 7. Gray-Iron Castings: ASTM A48/A48M, Class 200.
- C. Stainless Steel: Free of surface blemishes and complying with the following:
1. Sheet, Strip, Plate, and Flat Bars: ASTM A240/A240M or ASTM A666.
 2. Pipe: Schedule 40 steel pipe complying with ASTM A312/A312M.
 3. Tubing: ASTM A554.
- D. Wood: Surfaced smooth on four sides with eased edges; kiln dried, free of knots, solid stock of species indicated.
1. Wood Species: Manufacturer's standard.
- E. Fiberglass: Multiple laminations of glass-fiber-reinforced polyester resin with UV-light stable, colorfast, nonfading, weather- and stain-resistant, colored polyester gel coat, and with manufacturer's standard finish.
- F. Plastic: Color impregnated, color and UV-light stabilized, and mold resistant.
1. Polyethylene: Fabricated from virgin plastic HDPE resin.
- G. Anchors, Fasteners, Fittings, and Hardware: Manufacturer's standard, corrosion-resistant-coated or noncorrodible materials; commercial quality, tamperproof, vandal and theft resistant.

- H. Nonshrink, Nonmetallic Grout: Premixed, factory-packaged, nonstaining, noncorrosive, nongaseous grout complying with ASTM C1107/C1107M; recommended in writing by manufacturer, for exterior applications.
- I. Erosion-Resistant Anchoring Cement: Factory-packaged, nonshrink, nonstaining, hydraulic-controlled expansion cement formulation for mixing with potable water at Project site to create pourable anchoring, patching, and grouting compound; resistant to erosion from water exposure without needing protection by a sealer or waterproof coating; recommended in writing by manufacturer, for exterior applications.
- J. Galvanizing: Where indicated for steel and iron components, provide the following protective zinc coating applied to components after fabrication:
 - 1. Zinc-Coated Tubing: External, zinc with organic overcoat, consisting of a minimum of 0.9 oz./sq. ft. of zinc after welding, a chromate conversion coating, and a clear, polymer film. Internal, same as external or consisting of 81 percent zinc pigmented coating, not less than 0.3 mil thick.
 - 2. Hot-Dip Galvanizing: According to ASTM A123/A123M, ASTM A153/A153M, or ASTM A924/A924M.

2.6 WOOD-PRESERVATIVE-TREATED MATERIALS

- A. Preservative Treatment: Pressure-treat wood according to AWPA U1, Use Category UC3b, and the following:
 - 1. Use preservative chemicals acceptable to authorities having jurisdiction and containing no arsenic or chromium. Use chemical formulations that do not bleed through or otherwise adversely affect finishes. Do not use colorants to distinguish treated materials from untreated materials.
 - 2. Kiln-dry lumber and plywood after treatment to a maximum moisture content, respectively, of 19 and 15 percent. Do not use materials that are warped or do not comply with requirements for untreated materials.

2.7 FABRICATION

- A. Metal Components: Form to required shapes and sizes with true, consistent curves, lines, and angles. Separate metals from dissimilar materials to prevent electrolytic action.
- B. Welded Connections: Weld connections continuously. Weld solid members with full-length, full-penetration welds and hollow members with full-circumference welds. At exposed connections, finish surfaces smooth and blended, so no roughness or unevenness shows after finishing and welded surface matches contours of adjoining surfaces.
- C. Pipes and Tubes: Form simple and compound curves by bending members in jigs to produce uniform curvature for each repetitive configuration required; maintain cylindrical cross section of member throughout entire bend without buckling, twisting, cracking, or otherwise deforming exposed surfaces of handrail and railing components.

- D. Preservative-Treated Wood Components: Complete fabrication of treated items before treatment if possible. If cut after treatment, apply field treatment complying with AWP M4 to cut surfaces.
- E. Exposed Surfaces: Polished, sanded, or otherwise finished; all surfaces smooth, free of burrs, barbs, splinters, and sharpness; all edges and ends rolled, rounded, or capped.
- F. Factory Assembly: Factory assemble components to greatest extent possible to minimize field assembly. Clearly mark units for assembly in the field.

2.8 GENERAL FINISH REQUIREMENTS

- A. Appearance of Finished Work: Noticeable variations in same piece are unacceptable. Variations in appearance of adjoining components are acceptable if they are within the range of approved Samples and are assembled or installed to minimize contrast.

2.9 ALUMINUM FINISHES

- A. Powder-Coat Finish: Manufacturer's standard polyester powder-coat finish complying with finish manufacturer's written instructions for surface preparation, including pretreatment, application, baking, and minimum dry film thickness.

2.10 STEEL AND GALVANIZED-STEEL FINISHES

- A. Powder-Coat Finish: Manufacturer's standard polyester, powder-coat finish complying with finish manufacturer's written instructions for surface preparation, including pretreatment, application, baking, and minimum dry film thickness.
- B. PVC Finish: Manufacturer's standard, UV-light stabilized, mold-resistant, slip-resistant, matte-textured, dipped or sprayed-on, PVC-plastisol finish, with flame retardant added; complying with coating manufacturer's written instructions for pretreatment, application, and minimum dry film thickness.

2.11 IRON FINISHES

- A. Powder-Coat Finish: Manufacturer's standard polyester powder-coat finish complying with finish manufacturer's written instructions for surface preparation, including pretreatment, application, baking, and minimum dry film thickness.

2.12 STAINLESS STEEL FINISHES

- A. Surface Preparation: Remove tool and die marks and stretch lines, or blend into finish.
- B. Polished Finishes: Grind and polish surfaces to produce uniform finish, free of cross scratches.
 - 1. Run directional finishes with long dimension of each piece.

Curbside Exterior Improvements
West Virginia International Yeager Airport (CRW)
Charleston, West Virginia

2. Directional Satin Finish: ASTM A480/A480M, No 4.
3. Dull Satin Finish: ASTM A480/A480M, No. 6.

PART 3 - EXECUTION

3.1 EXAMINATION

- A. Examine areas and conditions, with Installer present, for compliance with requirements for correct and level finished grade, mounting surfaces, installation tolerances, and other conditions affecting performance of the Work.
- B. Proceed with installation only after unsatisfactory conditions have been corrected.

3.2 INSTALLATION

- A. Comply with manufacturer's written installation instructions unless more stringent requirements are indicated. Complete field assembly of site furnishings where required.
- B. Unless otherwise indicated, install site furnishings after landscaping and paving have been completed.
- C. Install site furnishings level, plumb, true, and securely anchored or positioned at locations indicated on Drawings.

END OF SECTION

RENOVATIONS TO CRW - CURBSIDE EXTERIOR & TERMINAL ELEVATOR IMPROVEMENTS

WEST VIRGINIA INTERNATIONAL YEAGER AIRPORT (CRW)
CHARLESTON, WV

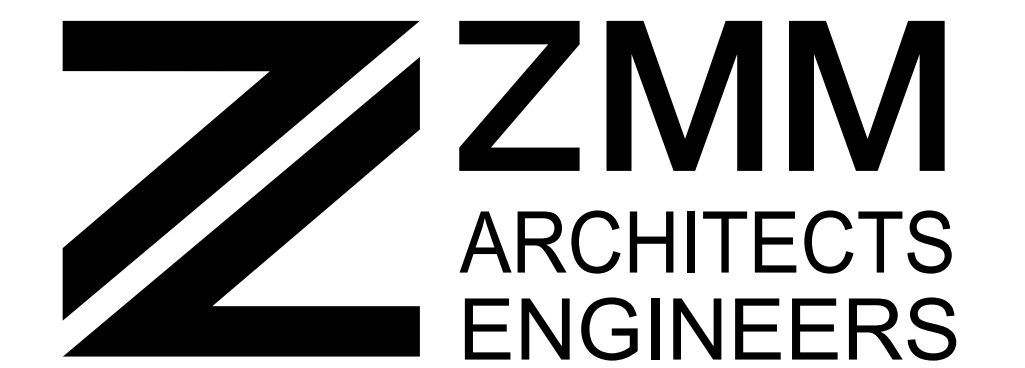
10.06.2025

OWNER



WEST VIRGINIA INTERNATIONAL
YEAGER AIRPORT
100 AIRPORT RD #175,
CHARLESTON, WEST VIRGINIA,
25311

ARCHITECT AND ENGINEER



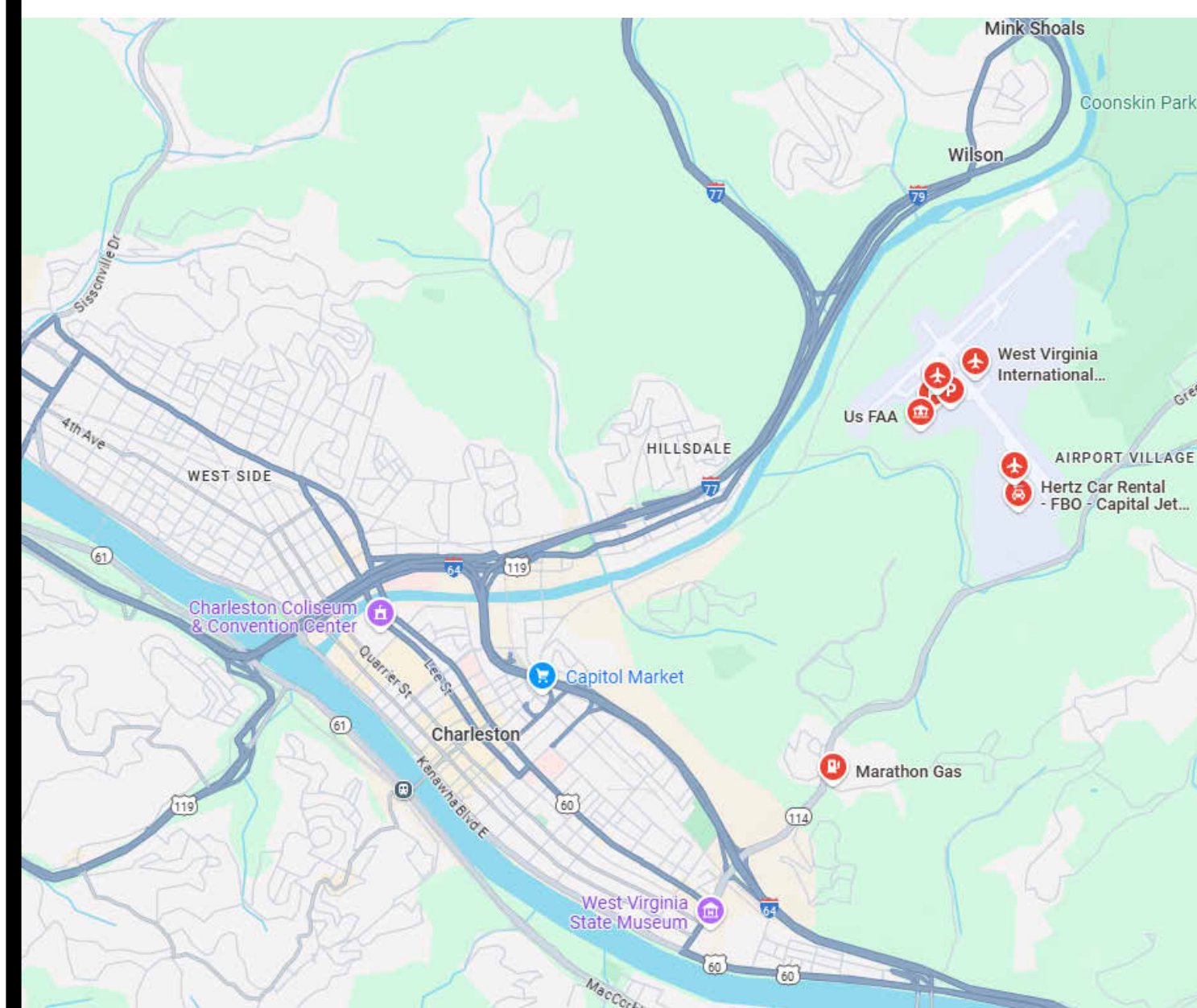
222 Lee Street, West
Charleston, West Virginia 25302
Phone: 304.342.0159
Fax: 304.345.8144

www.zmm.com

BIDDING DOCUMENTS

© by ZMM LLC

SITE LOCATION MAP



DRAWING INDEX

SHEET NO.	SHEET NAME	SHEET NO.	SHEET NAME	SHEET NO.	SHEET NAME	SHEET NO.	SHEET NAME
GENERAL							
G000	COVER SHEET						
ARCHITECTURAL							
A110R1	OVERALL GROUND FLOOR PLAN - DEMOLITION						
A111	OVERALL REFLECTED CEILING PLAN - DEMOLITION						
A112	ELEVATIONS - DEMOLITION						
A113	ELEVATIONS - DEMOLITION						
A130R1	OVERALL GROUND FLOOR PLAN						
A131R1	GROUND FLOOR PLANS						
A132R1	GROUND FLOOR PLANS 'B' & 'C'						
A133	OVERALL REFLECTED CEILING PLAN						
A134R1	REFLECTED CEILING PLAN - AREA 'A'						
A135R1	REFLECTED CEILING PLANS - AREA 'B' & 'C'						
A136R1	ELEVATIONS						
A137R1	ELEVATIONS						
A138R1	ENLARGED ELEVATIONS						
A139	ENLARGED ELEVATIONS						
A140R1	CANOPY SECTION						
A512	DETAILS						
ELECTRICAL							
E101	GENERAL NOTES & LEGEND						
E201	OVERALL PLAN						
E301	LIGHTING DEMOLITION PLAN						
E401R1	LIGHTING NEW WORK PLAN						
E501	ALTERNATE 2 - ELEVATOR PLANS						

BUILDING INFORMATION

USE AND OCCUPANCY CLASSIFICATION

INTERNATIONAL BUILDING CODE 2018
NFPA 101 LIFE SAFETY CODE 2021
AIRPORT

CONSTRUCTION CLASSIFICATION

INTERNATIONAL BUILDING CODE 2018
NFPA 101 LIFE SAFETY CODE 2021
TYPE II (222) - IR

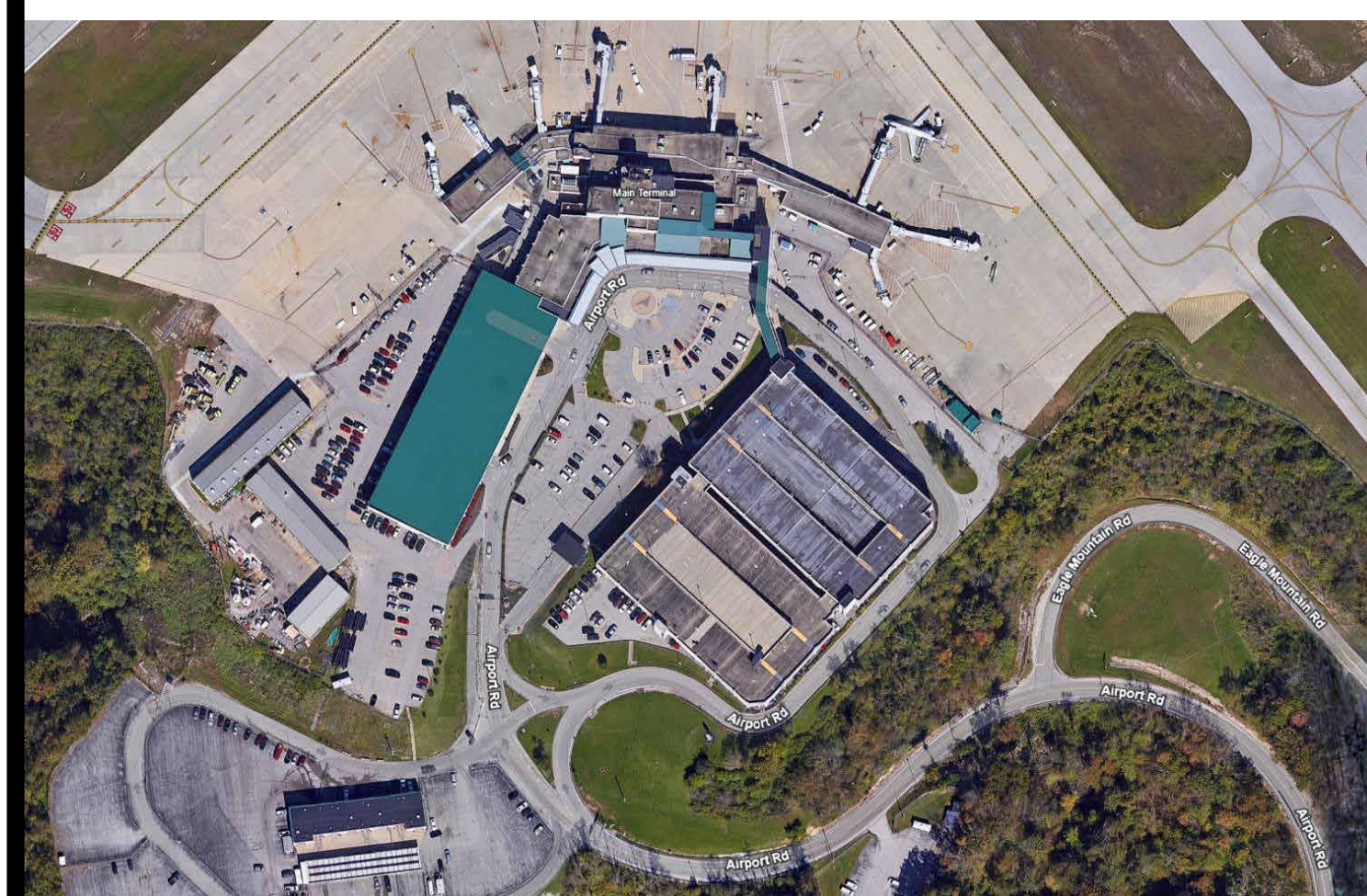
BUILDING AREA

AREA OF RENOVATION:
-1,802 SQ. FT. - EXTERIOR CURBSIDE AREA

PROFESSIONAL SEALS



PROJECT LOCATION



GENERAL DEMOLITION NOTES

- ALL DEMOLITION WORK SHALL BE PERFORMED IN COMPLIANCE WITH ALL APPLICABLE LOCAL, STATE AND FEDERAL CODES AND REGULATIONS.
- THE DEMOLITION PLANS ARE INTENDED TO REASONABLY REPRESENT EXISTING CONDITIONS. ACTUAL CONDITIONS MAY DEVIATE FROM THAT SHOWN ON THE DRAWINGS. THE CONTRACTOR SHALL VISIT THE JOBSITE AND VERIFY ACTUAL CONDITIONS AND COORDINATE THE DEMOLITION WORK WITH THE NEW WORK SO THAT DEMOLITION IS COMPLETE. FIELD VERIFY ALL DIMENSIONS SHOWN ON DRAWINGS PRIOR TO CONSTRUCTION AND NOTIFY ARCHITECT OF ANY DISCREPANCIES.
- PROVIDE ALL LABOR, MATERIAL, EQUIPMENT AND SERVICES AND PERFORM ALL OPERATIONS REQUIRED FOR COMPLETE EXTERIOR DEMOLITION AND RELATED WORK AS DESCRIBED AND SPECIFIED HEREIN, AND AS MAY BE REASONABLY IMPLIED AS NECESSARY TO COMPLETE NEW CONSTRUCTION WORK.
- THE CONTRACTOR SHALL BE AWARE THAT THE BUILDING WILL BE OCCUPIED AND IN-USE DURING THE LENGTH OF THE CONTRACT. THE CONTRACTOR SHALL CONDUCT THEIR OPERATIONS SO THAT THERE WILL BE MINIMUM INTERFERENCE WITH THE CONTINUED OPERATIONS OF THE BUILDING AND STAFF. COORDINATE TIMING AND HOURS OF DEMOLITION OPERATIONS WITH THE OWNER. MINIMIZE NOISE FROM DEMOLITION OPERATIONS PARTICULARLY WHEN CONDUCTED DURING REGULAR WORKING HOURS.
- CONDUCT DEMOLITION OPERATIONS TO PREVENT INJURY TO PEOPLE AND DAMAGE TO ADJACENT BUILDING AREAS. THE CONTRACTOR SHALL TAKE ALL PRECAUTIONS TO ENSURE SAFE PASSAGE OF PEOPLE THROUGH AND AROUND SELECTIVE DEMOLITION AREAS. MAINTAIN SAFE MEANS OF EGRESS FROM THE BUILDING AT ALL TIMES.
- THE CONTRACTOR IS RESPONSIBLE FOR INSURING THE STRUCTURAL STABILITY OF THE EXISTING BUILDING IN THE AREAS INVOLVING NEW WORK OR FOR PROTECTING THE EXISTING BUILDING FROM DAMAGE DURING THE COURSE OF THE WORK. DO NOT ALTER THE STRUCTURAL INTEGRITY OF THE EXISTING BUILDING OR ITS ASSEMBLIES UNLESS SPECIFICALLY DIRECTED TO BY THE ARCHITECT.
- NO DEMOLITION SHALL OCCUR WHICH LEAVES THE BUILDINGS INTERIOR WITHOUT WEATHER PROTECTION. ALL DEMOLITION AT EXTERIOR SURFACES SHALL BE FOLLOWED IMMEDIATELY BY PROTECTIVE CONSTRUCTION. THE CONTRACTOR SHALL PROVIDE AND INSTALL SECURE TEMPORARY PROTECTION IN ALL OPENINGS.
- EXISTING CONSTRUCTION TO REMAIN UNLESS OTHERWISE NOTED. THE CONTRACTOR SHALL TAKE ALL POSSIBLE PRECAUTIONS AGAINST DAMAGE TO ALL EXISTING CONSTRUCTION INTENDED TO REMAIN. TAKE CARE NOT TO ENDOURCH ON ADJACENT OCCUPIED AREAS OR AREAS NOT WITHIN THE SCOPE OF WORK. ANY DAMAGE CAUSED BY THE CONTRACTORS DEMOLITION OPERATIONS SHALL BE REPAIRED AT CONTRACTORS EXPENSE TO THE COMPLETE SATISFACTION OF THE ARCHITECT AND OWNER.
- GENERAL CONTRACTOR SHALL MAINTAIN A SEPARATION BETWEEN AREAS WITHIN THE SCOPE OF THE WORK AND AREAS OUTSIDE THE SCOPE OF THE WORK BY PROVIDING A DUST BARRIER FOR PROTECTION OF EXISTING AREAS TO REMAIN AS REQUIRED. USE ALL MEANS NECESSARY TO PREVENT THE SPREAD OF DUST TO ADJACENT AREAS.
- REMOVE FROM SITE ALL DEMOLISHED MATERIALS, DEBRIS AND RUBBISH ON A DAILY BASIS. DO NOT ACCUMULATE DEBRIS AT THE SITE. DISPOSE OF ALL DEMOLISHED OR REMOVED MATERIALS LEGALLY OFF THE SITE COMPLYING WITH ALL LOCAL HAULING AND DISPOSAL REQUIREMENTS. UPON COMPLETION, CLEAN ALL AREAS IMPACTED BY THE DEMOLITION, INCLUDING, BUT NOT LIMITED TO, ADJACENT OCCUPIED AREAS AND AREAS NOT WITHIN THE SCOPE OF WORK.
- THE ARCHITECT HAS NO KNOWLEDGE OF AND SHALL NOT BE HELD LIABLE FOR ANY ASBESTOS OR OTHER HAZARDOUS MATERIALS ON JOBSITE. IF THE CONTRACTOR ENCOUNTERS WHAT APPEARS TO BE HAZARDOUS MATERIALS DURING CONSTRUCTION, HE SHALL IMMEDIATELY ISOLATE THE AFFECTED AREAS AND FOLLOW THE PROCEDURES OUTLINED IN THE PROJECT MANUAL FOR RESOLUTION.
- CONTRACTOR TO REVIEW WITH ARCHITECT ALL ITEMS SCHEDULED TO BE DEMOLISHED, SALVAGED AND RELOCATED. SAID ITEMS TO BE REMOVED CAREFULLY, PROTECTED AND STORED PRIOR TO RELOCATION.
- DEMO PLAN KEYED NOTES APPLY TO ITEMS TAGGED, AND REPETITIVE/TYPICAL ITEMS & CONDITIONS WHICH MAY ONLY BE TAGGED AT ONE LOCATION AND NOT AT EVERY OCCURRENCE.
- REFER TO ELECTRICAL DRAWINGS FOR SPECIFIC DEMOLITION INFORMATION NOT INDICATED ON THESE DRAWINGS.
- REPAIR ALL AREAS DAMAGED DURING DEMOLITION TO MATCH ADJACENT CONSTRUCTION.
- PREPARE ALL AREAS REMAINING AFTER DEMOLITION TO RECEIVE NEW FINISH AND/OR CONSTRUCTION.
- PATCH ALL HOLES IN WALLS, ROOFS, FLOOR SLABS, ETC. FROM DEMOLITION OF EXISTING TO MATCH ADJACENT CONSTRUCTION.

NO.	REVISIONS	DATE
1 <td>ADDENDUM NO. 2 <td>10.27.2025</td> </td>	ADDENDUM NO. 2 <td>10.27.2025</td>	10.27.2025
	DESCRIPTION	



DEMOLITION KEYED NOTES

- EXISTING CONCRETE BASE AND CAP TO REMAIN, TYP.
- EXISTING CONCRETE COLUMN TO REMAIN, TYP.
- EXISTING CANOPY COLUMN (METAL PANEL) TO REMAIN, TYP.
- LINE OF EXISTING WALL BAND ABOVE TO REMAIN, TYP.
- LINE OF EXISTING CANOPY ABOVE TO REMAIN, TYP.
- EXISTING EXTERIOR CMU WALL (FLUTED) TO REMAIN, TYP. (U.N.O.)
- EXISTING GLASS DOORS (PART OF SEPARATE PROJECT) TO REMAIN, TYP.
- EXISTING WALL TO REMAIN (N.I.C.)
- EXISTING DOOR TO REMAIN (N.I.C.)
- REMOVE EXISTING RAMP
- EXISTING GUARDRAIL TO REMAIN
- REMOVE EIFS BACK TO EXISTING EXTERIOR SHEATHING, TYP.
- REMOVE PORTION OF FLUTES FROM EXISTING CMU PER DETAIL (4/A512)
- REMOVE EXISTING EPOXY FLOORING (EXTERIOR SIDE OF DOOR)
- REMOVE AND SALVAGE EXISTING WINDOW FOR RELOCATION
- REMOVE EXISTING WINDOW
- DISCONNECT AND REMOVE EXISTING 42"x18" INTAKE AIR LOUVER AND ANY ASSOCIATED DUCTWORK/WALL SLEEVE FROM EXISTING MECHANICAL PTAC UNIT. EXISTING MECHANICAL PTAC UNIT TO REMAIN.
- REMOVE SHADED PORTION OF EXISTING CONCRETE SIDEWALK SLAB
- ALT #1 - REMOVE EXISTING TEXTURED PAVERS AND CONCRETE PAVING

1 OVERALL FIRST FLOOR PLAN - DEMOLITION
3/32" = 1'-0"

RENOVATIONS TO
CRW - CURBSIDE EXTERIOR & TERMINAL ELEVATOR IMPROVEMENTS
WEST VIRGINIA INTERNATIONAL YEAGER AIRPORT (CRW)
CHARLESTON, WV
BIDDING DOCUMENTS

© by ZMM LLC.

**OVERALL
GROUND FLOOR
PLAN -
DEMOLITION**

DRAWN	CHECKED
CEC	RAP
JSA	DATE
	10.06.2025
	COMM. NO.
	25094

NO.	REVISIONS	DATE
1	ADDENDUM NO. 2	10/27/2025
	DESCRIPTION	

**RENOVATIONS TO
CRW - CURBSIDE EXTERIOR & TERMINAL ELEVATOR IMPROVEMENTS
WEST VIRGINIA INTERNATIONAL YEAGER AIRPORT (CRW)
CHARLESTON, WV**

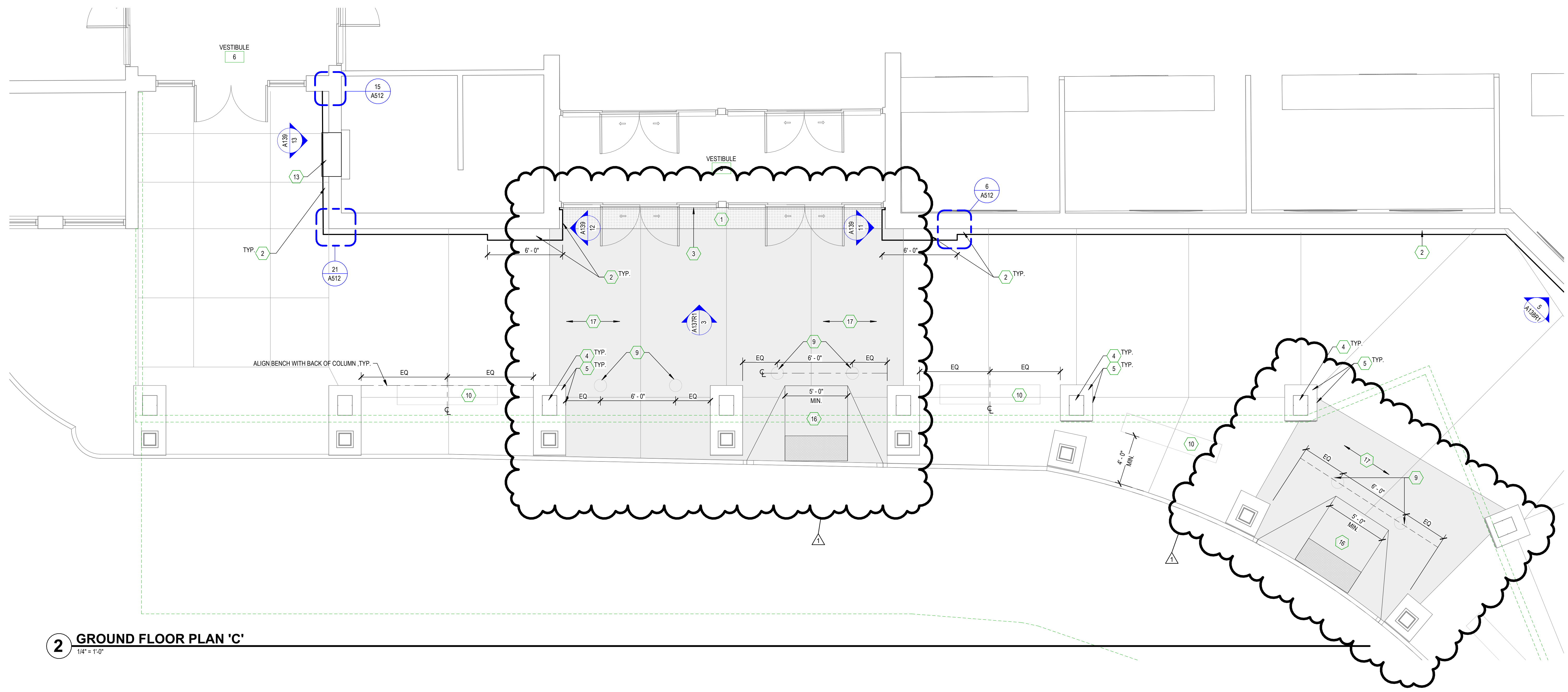
BIDDING DOCUMENTS

© by ZMM LLC.

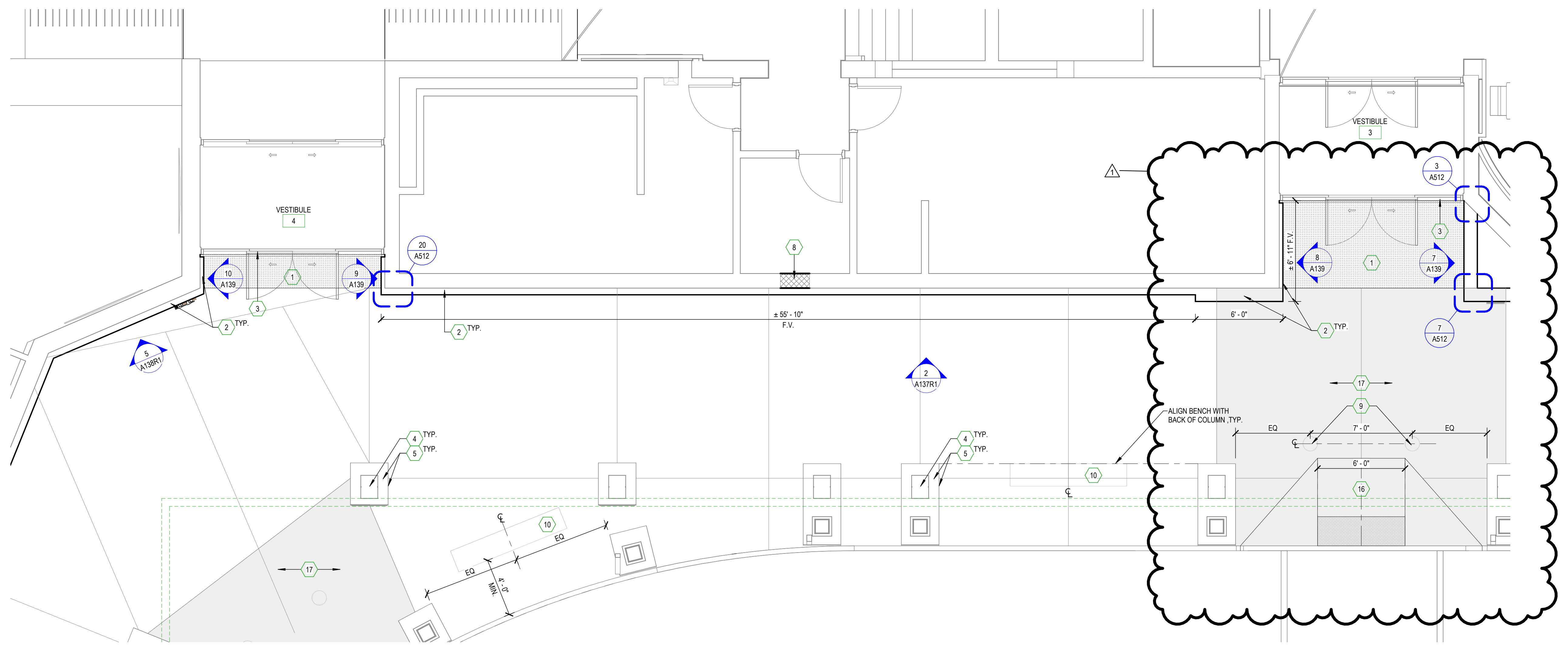
**GROUND FLOOR
PLANS 'B' & 'C'**

DRAWN	CHECKED
JSA	RAP
DATE	10.06.2025
COMM. NO.	25094

A132R1



2 GROUND FLOOR PLAN 'C'
1/4" = 1'-0"



1 GROUND FLOOR PLAN 'B'
1/4" = 1'-0"

KEYED NOTES

- 1 NEW EPOXY FLOORING - EF-1
- 2 MCM ON STUD FRAMING, TYP. - SEE ELEVATIONS AND FINISH LEGEND
- 3 PAINT EXISTING METAL CLOSURE ABOVE NEW DOORS PT-3
- 4 PAINT EXISTING CONCRETE COLUMN - PT-2
- 5 PAINT EXISTING CONCRETE BASE AND CAP - PT-1
- 6 PAINT EXISTING RAILING - PT-3
- 7 RELOCATE EXISTING WINDOW
- 8 FINISH EXISTING WALL TO MATCH ADJACENT CONSTRUCTION
- 9 NEW BOLLARD WITH BEVELED TOP
- 10 NEW HARDSCAPE BENCH
- 11 NEW WASTE RECEPTACLE
- 12 NEW SITE FURNITURE BENCH
- 13 INSTALL IN-WALL AIR LOUVER (MANUFACTURER: RUSKIN, MODEL: EL-F3730), DRAINABLE STATIONARY LOUVER, DIMENSIONS: 42"x16", FREE AREA (SQ. FT): 2.09; CONNECT LOUVER TO EXISTING MECHANICAL PTAC UNIT THROUGH EXTERIOR WALL WITH A 42"x16" WALL SLEEVE, TRANSITION WALL SLEEVE AT CONNECTION OF UNIT AS REQUIRED. REFER TO SPECIFICATION #239119.
- 14 ALT #1 - NEW CONCRETE SLAB - MATCH EXISTING CONCRETE SLAB CONTROL JOINTS
- 15 HOLD EXISTING JAMB LOCATION
- 16 NEW RAMP - SEE DETAIL (3/A10R1)
- 17 NEW CONCRETE SLAB SIDEWALK (MATCH EXISTING SLAB THICKNESS AND CONTROL JOINT PATTERN)

10/27/2025 3:56:02 PM C:\Users\jallen\Documents\25043_CRW - CURBSIDE_ELEVATOR_A_24_jallen\FMUG.rvt

KEYED NOTES

- 1 PERFORATED METAL SLAT CEILING
- 2 (MCM-1) METAL COMPOSITE MATERIAL SOFIT
- 3 EXISTING SPEAKER TO BE REINSTALLED - SEE ELECTRICAL
- 4 NEW LIGHTING FIXTURES - SEE ELECTRICAL
- 5 PAINT BOTTOM OF EXISTING BULKHEAD (PT-4)
- 6 PAINT BOTTOM OF EXISTING ACCENT BAND (PT-2)

NO.	REVISIONS	DATE
1	ADDENDUM NO. 2	10/27/2025
	DESCRIPTION	

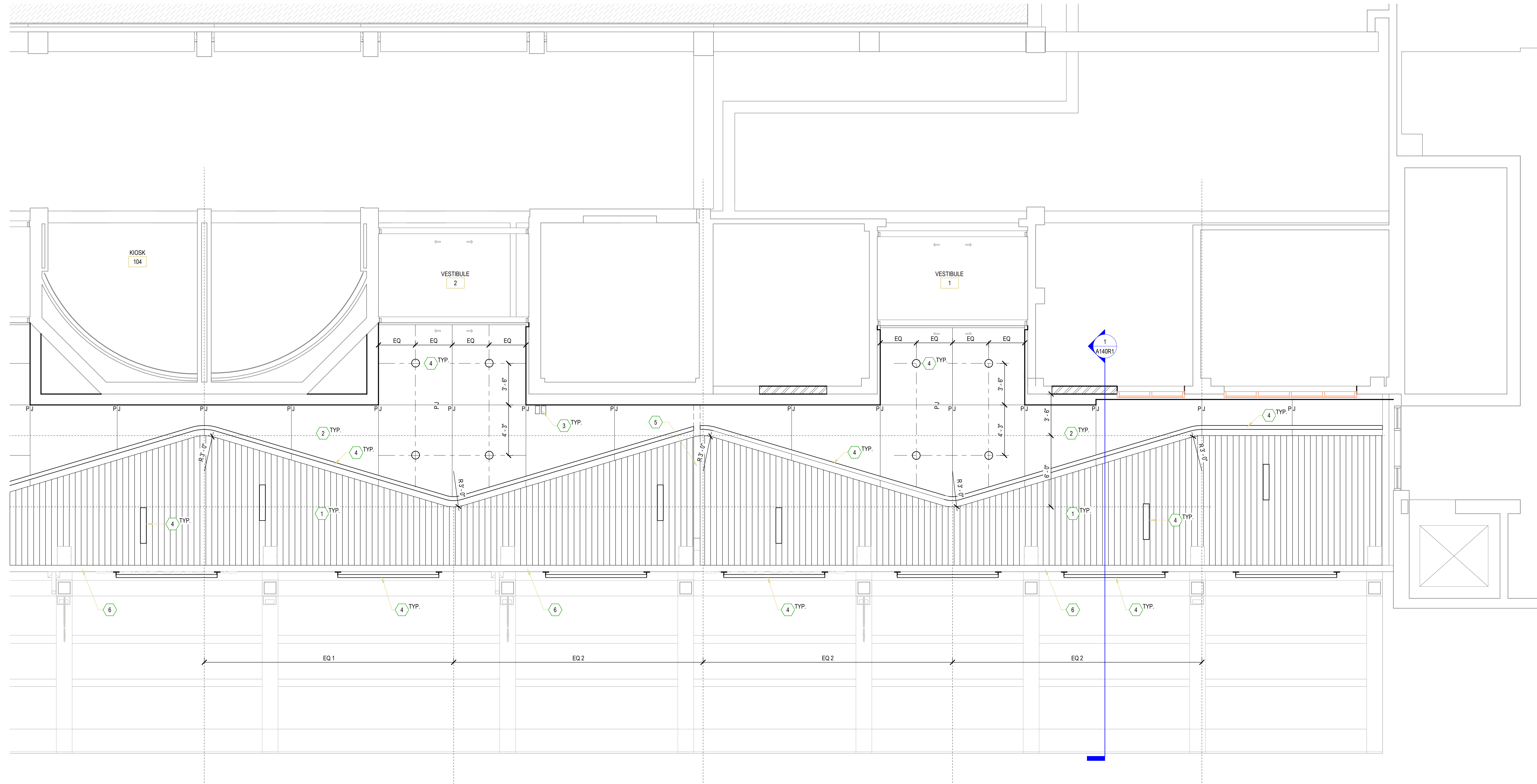
RENOVATIONS TO
CRW - CURBSIDE EXTERIOR & TERMINAL ELEVATOR IMPROVEMENTS
WEST VIRGINIA INTERNATIONAL YEAGER AIRPORT (CRW)
CHARLESTON, WV

BIDDING DOCUMENTS

© by ZMM LLC.

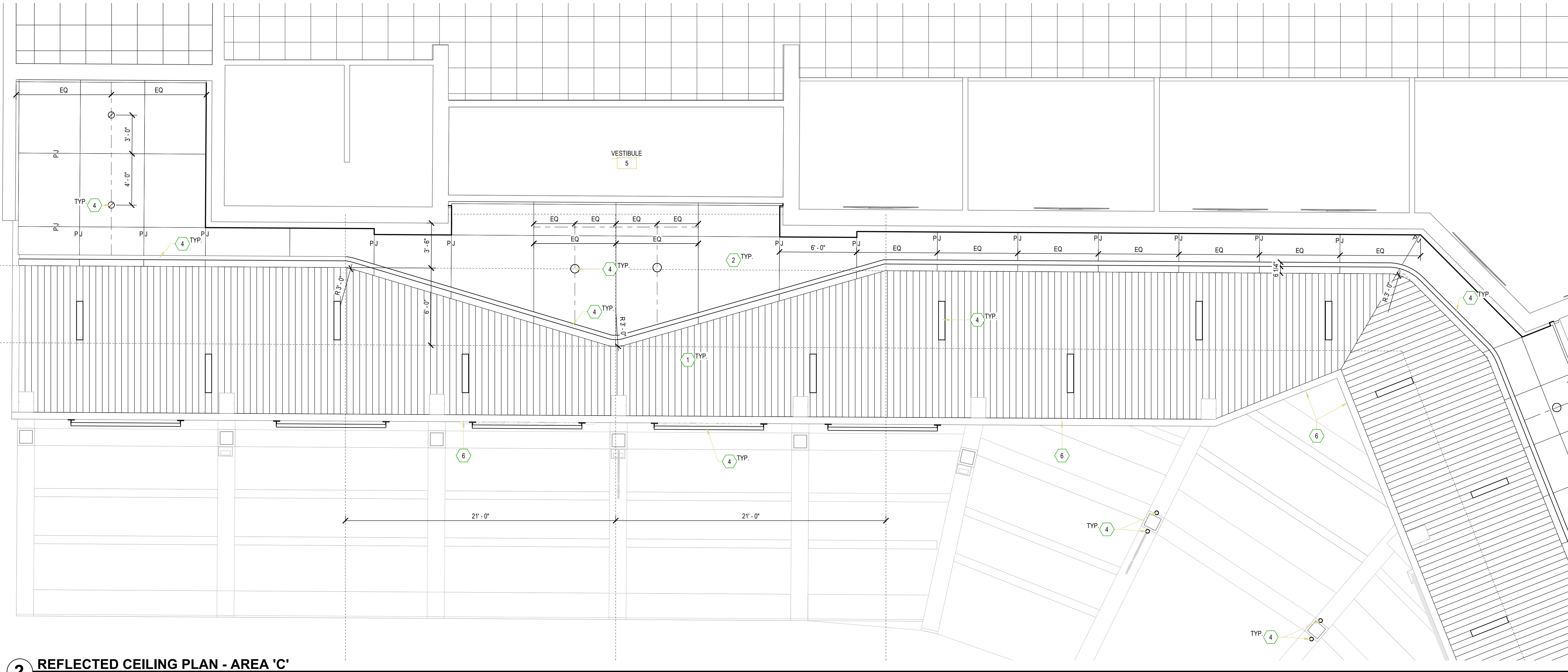
**REFLECTED
CEILING PLAN -
AREA 'A'**

DRAWN	CHECKED
JSA	RAP
CBR	DATE
	10.06.2025
	COMM. NO.
	25094

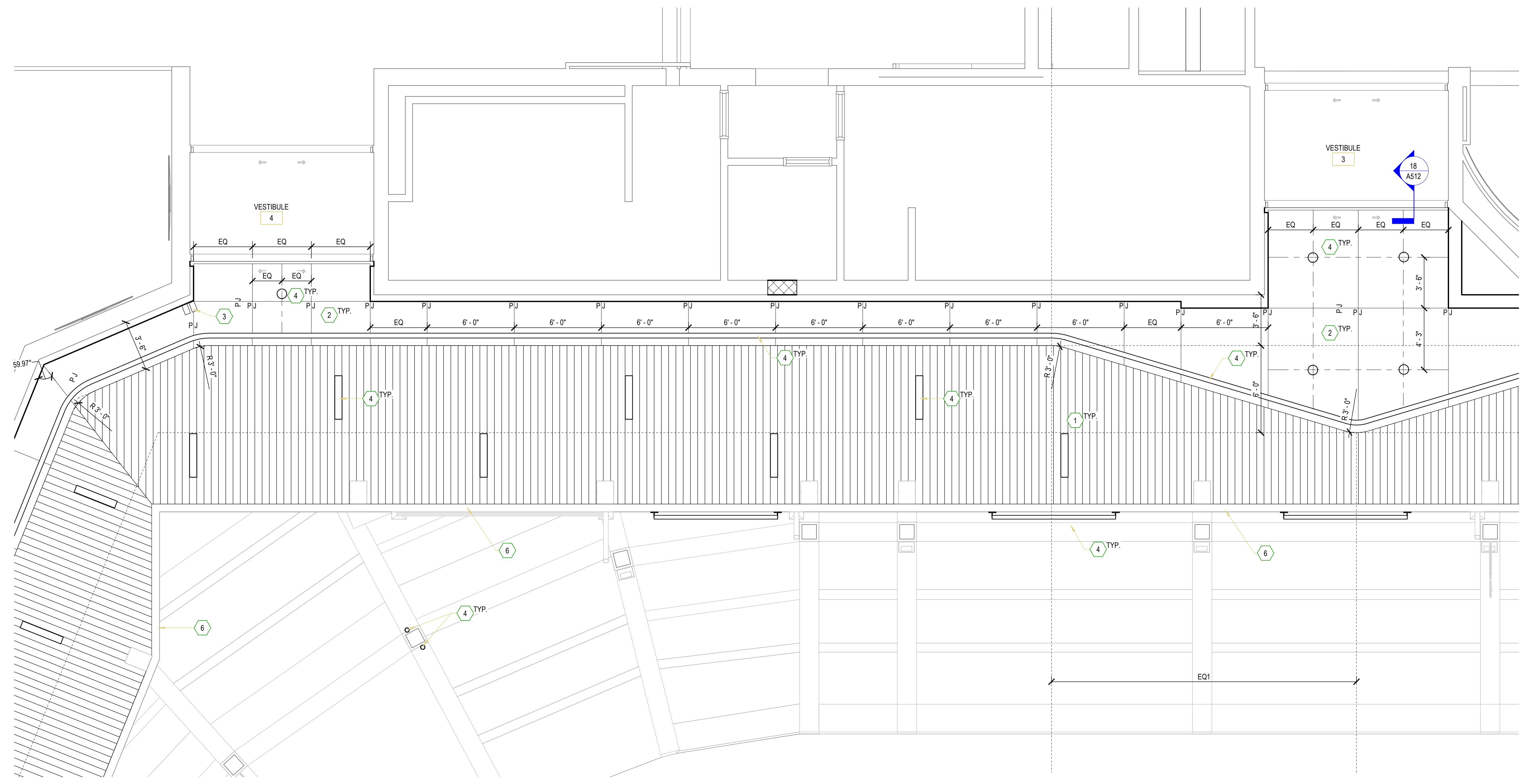


1 REFLECTED CEILING PLAN - AREA 'A'
1/4" = 1'-0"

NO.	REVISIONS	DATE
1	ADDITIONAL NO. 2	10/27/2025
	DESCRIPTION	



2 REFLECTED CEILING PLAN - AREA 'C'
1/4" = 1'-0"



1 REFLECTED CEILING PLAN - AREA 'B'
1/4" = 1'-0"

- KEYED NOTES**
- PERFORATED METAL SLAT CEILING
 - (MCK-4) - METAL COMPOSITE MATERIAL SOFFIT
 - EXISTING SPEAKER TO BE REINSTALLED - SEE ELECTRICAL
 - NEW LIGHTING FIXTURES - SEE ELECTRICAL
 - PAINT BOTTOM OF EXISTING BULKHEAD (PT-4)
 - PAINT BOTTOM OF EXISTING ACCENT BAND (PT-2)

RENOVATIONS TO
CRW - CURBSIDE EXTERIOR & TERMINAL ELEVATOR IMPROVEMENTS
WEST VIRGINIA INTERNATIONAL YEAGER AIRPORT (CRW)
CHARLESTON, WV
BIDDING DOCUMENTS

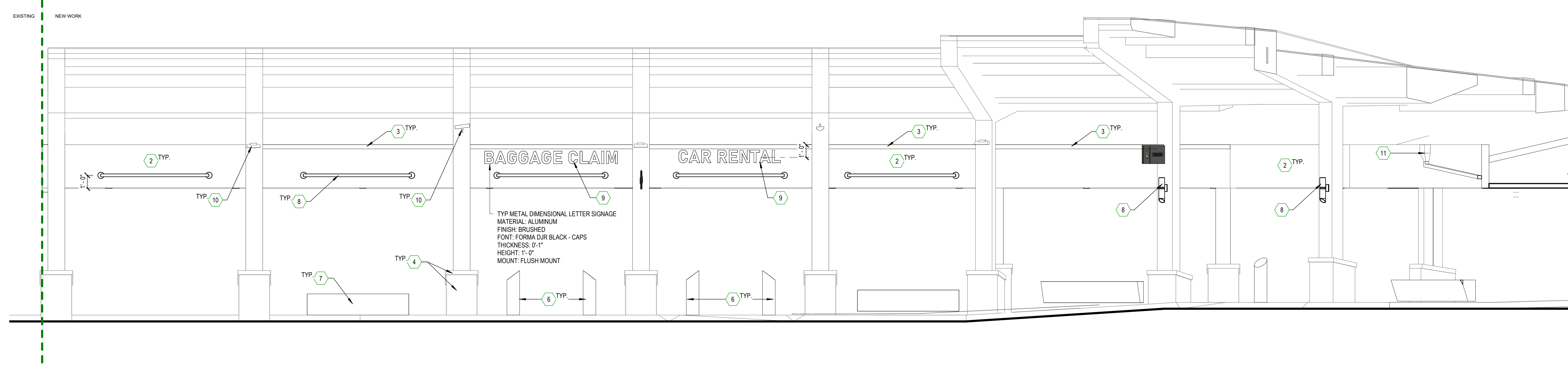
© by ZMM LLC.

REFLECTED CEILING PLANS - AREA 'B' & 'C'

DRAWN	CHECKED
JSA	RAP
CBR	DATE
	10.06.2025
	COMM. NO.
	25094

A135R1

NO.	REVISIONS	DATE
1	ADDENDUM NO. 2	10/27/2025
	DESCRIPTION	

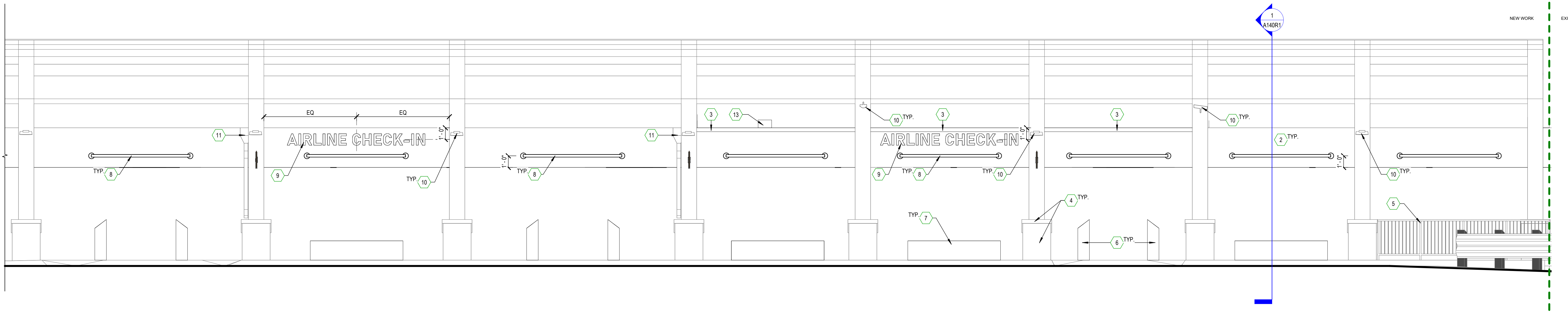


3 ELEVATION 'C' - CURBSIDE
1/4" = 1'-0"



1 ELEVATION 'B' - CURBSIDE
1/4" = 1'-0"

- KEYED NOTES**
- MCM ON STUD FRAMING - TYP.
 - PAINT EXISTING ACCENT BAND - (PT-2)
 - PAINT EXISTING METAL COPING - (PT-2)
 - PAINT EXISTING CONCRETE BASE AND CAP - (PT-1)
 - PAINT EXISTING RAILING - (PT-3)
 - NEW BOLLARD WITH BEVELED TOP
 - NEW HARDSCAPE BENCH
 - NEW LIGHTING FIXTURE - SEE ELECTRICAL (CENTER BETWEEN COLUMNS)
 - NEW METAL DIMENSIONAL CHARACTERS SIGNAGE (CENTER BETWEEN COLUMNS)
 - EXISTING LIGHTING FIXTURES AND CAMERAS TO REMAIN - UNLESS NOTED OTHERWISE
 - PAINT EXISTING CONDUCTOR HEADS AND DOWNSPOUTS - (PT-2)
 - NEW ANODIZED ALUMINUM DOWNSPOUT TO MATCH EXISTING. SIZE AND TIE INTO ADJACENT DOWNSPOUT. PAINT: PT-2.
 - REINSTALL EXISTING SPEAKER MOUNTED TO TOP OF WALL - SEE ELECTRICAL.
 - REINSTALL EXISTING WALL MOUNTED CAMERA - SEE ELECTRICAL.
 - RELOCATED WALL HYDRANT BOX



2 ELEVATION 'A' - CURBSIDE
1/4" = 1'-0"

**RENOVATIONS TO
CRW - CURBSIDE EXTERIOR & TERMINAL ELEVATOR IMPROVEMENTS
WEST VIRGINIA INTERNATIONAL YEAGER AIRPORT (CRW)
CHARLESTON, WV**

© by ZMM LLC.






ELEVATIONS

DRAWN	CHECKED
JSA	ARK
CBR	DATE
	10.06.2025
	COMM. NO.
	25094

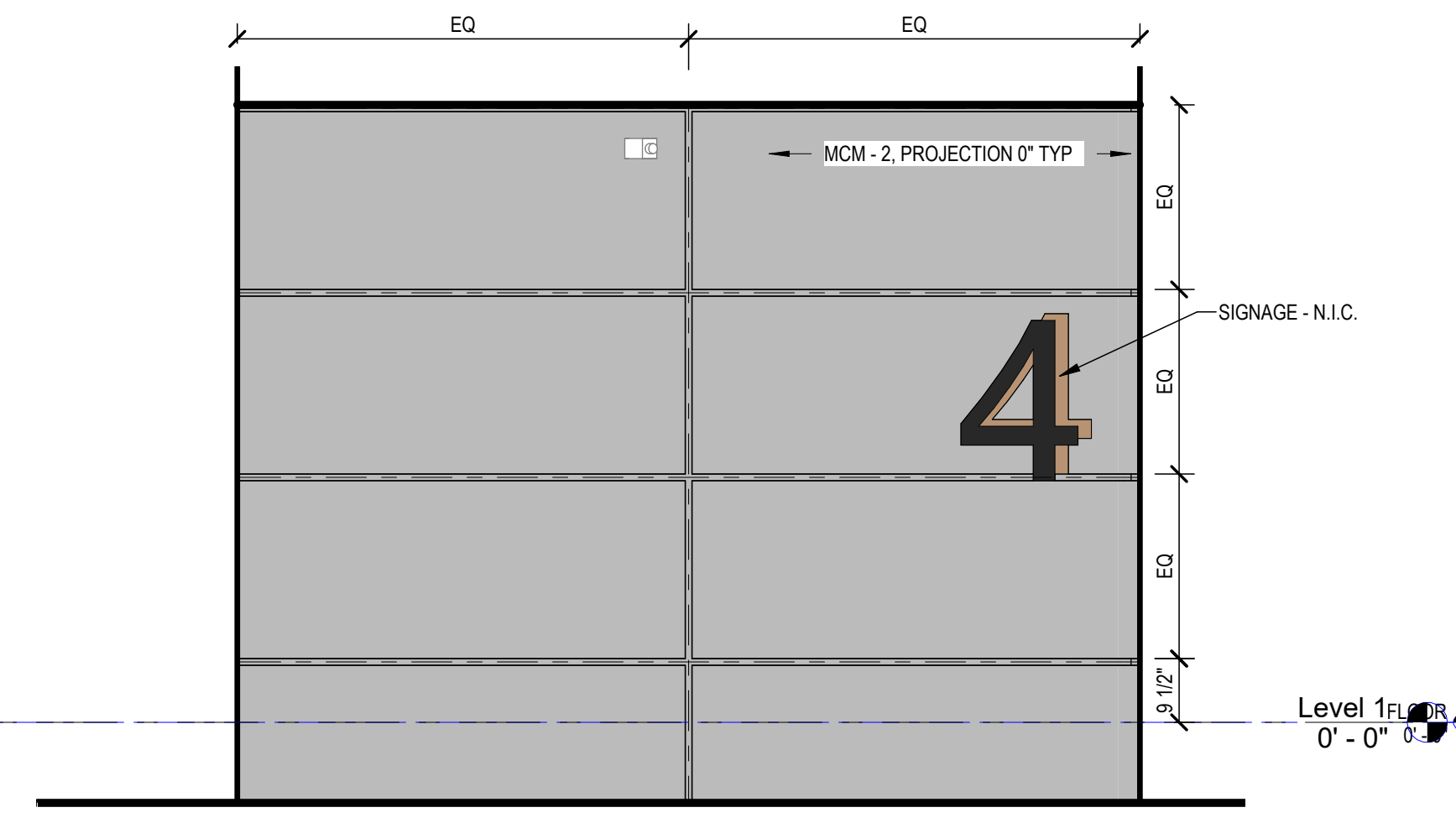
GENERAL NOTES

- METAL PANEL IS INSTALLED 2" OFF FACE OF SHEATHING UNLESS OTHERWISE NOTED. (0" TYPICAL)

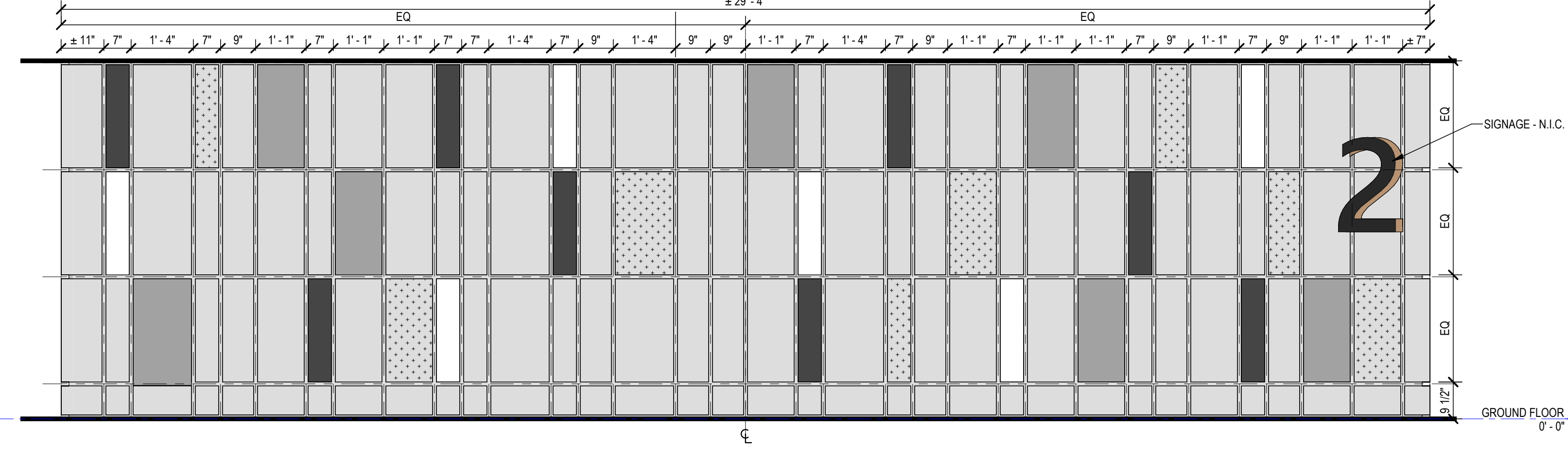
METAL PANEL LEGEND

-  MCM - 1, PROJECTION 0"
-  MCM - 2, PROJECTION +2"
-  MCM - 3, PROJECTION +1"
-  MCM - 4, PROJECTION 0"
-  MCM - 1, PROJECTION +1.5"

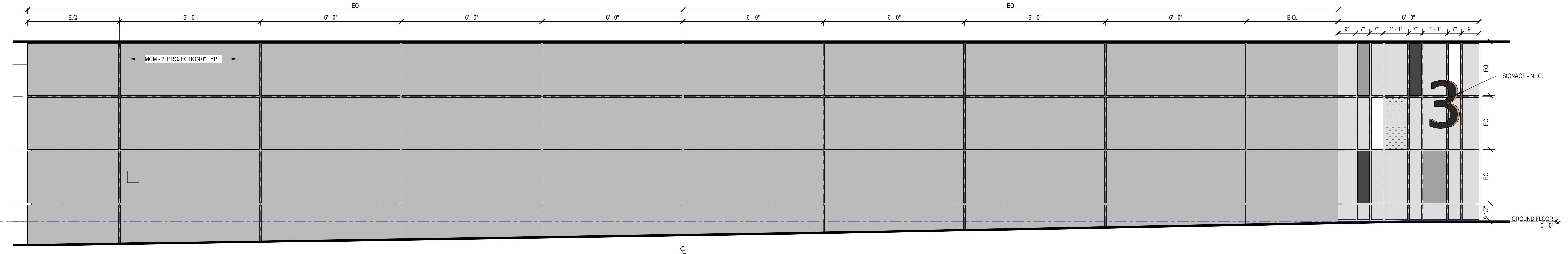
FINISH LEGEND				
CODE	TYPE	MANUFACTURER	STYLE / COLOR	REMARKS
PT-1	PAINT - COLUMN BASES, LT GRAY	SHERWIN WILLIAMS	SW 7657 TINSMITH	
PT-2	PAINT - SOFFIT AND COLUMNS, CHARCOAL	SHERWIN WILLIAMS	SW 7069 IRON ORE	
PT-3	PAINT - BLACK	SHERWIN WILLIAMS	SW 6238 TRICOORN BLACK	
PT-4	PAINT - WOOD COLOR MATCH	SHERWIN WILLIAMS	SW 6117 SMOKEY TOPAZ	



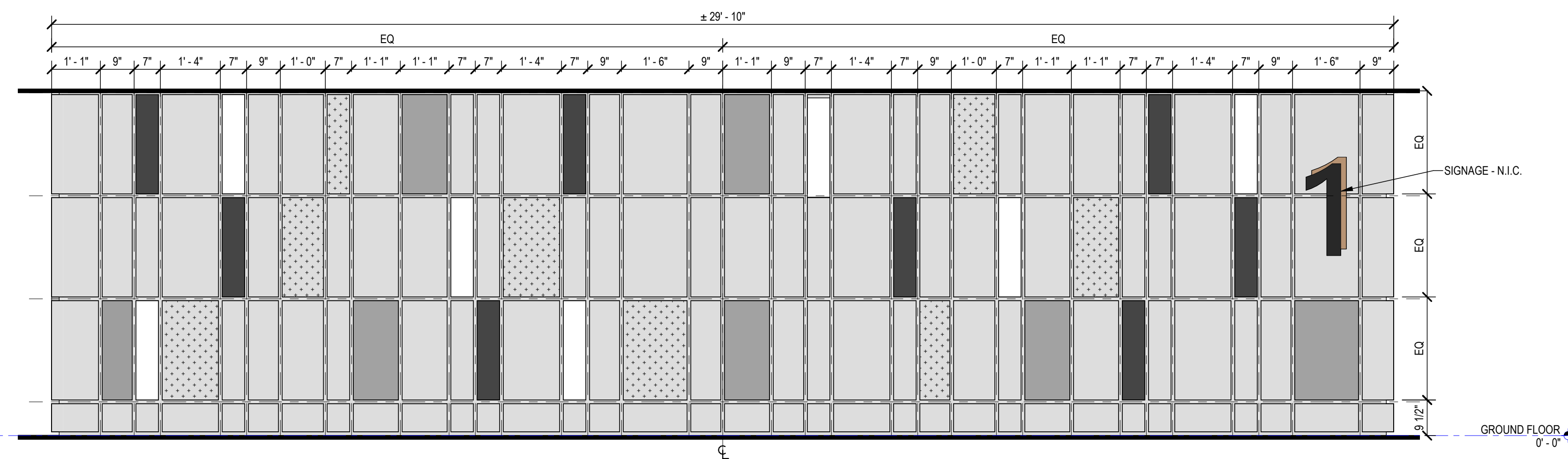
5 ENLARGED ELEVATION
1/2" = 1'-0"



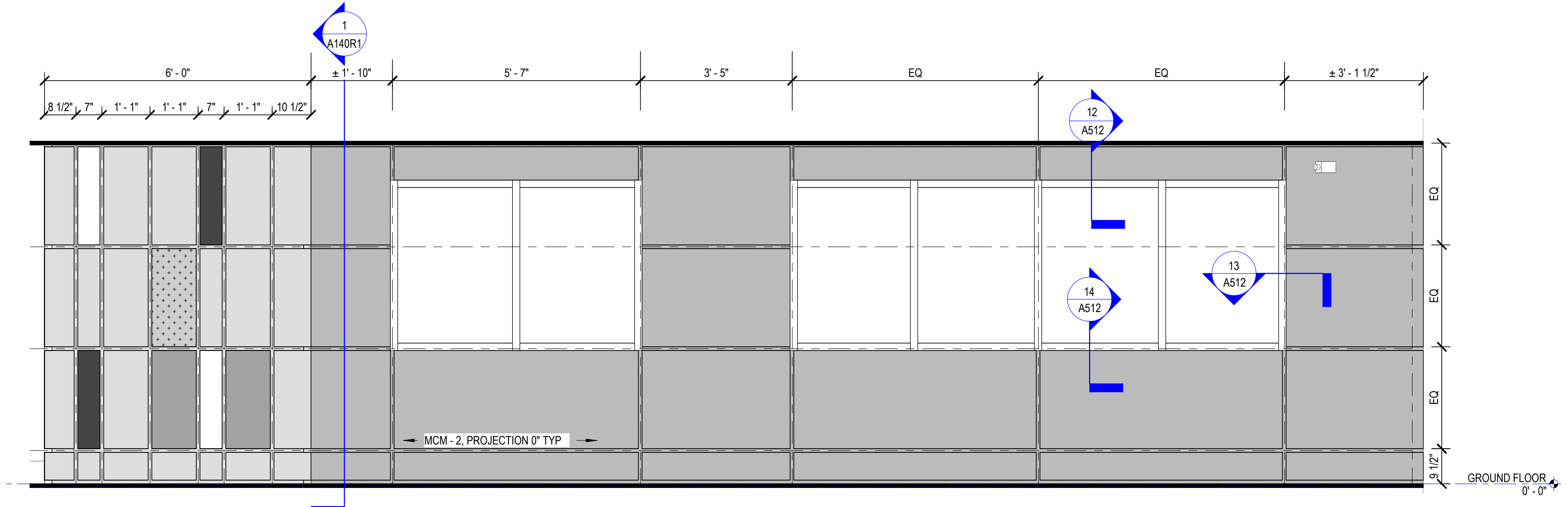
4 ENLARGED ELEVATION
1/2" = 1'-0"



3 ENLARGED ELEVATION
1/2" = 1'-0"



2 ENLARGED ELEVATION
1/2" = 1'-0"



1 ENLARGED ELEVATION
1/2" = 1'-0"

NO.	REVISIONS	DATE
1 <td>ADDITION NO. 2 <td>10/27/2025</td> </td>	ADDITION NO. 2 <td>10/27/2025</td>	10/27/2025

RENOVATIONS TO
CRW - CURBSIDE EXTERIOR & TERMINAL ELEVATOR IMPROVEMENTS
WEST VIRGINIA INTERNATIONAL YEAGER AIRPORT (CRW)
CHARLESTON, WV

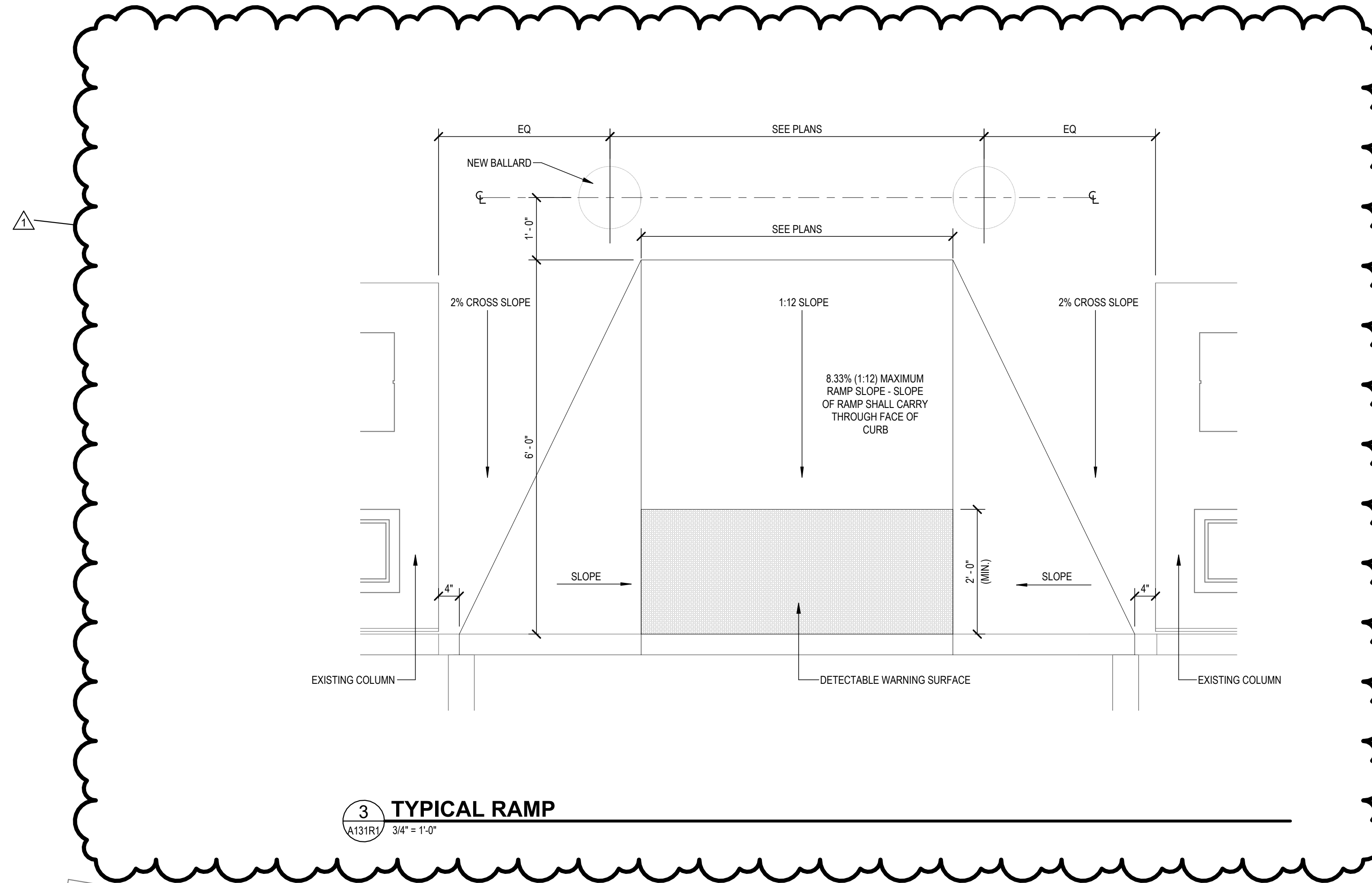
BIDDING DOCUMENTS

© by ZMM LLC.

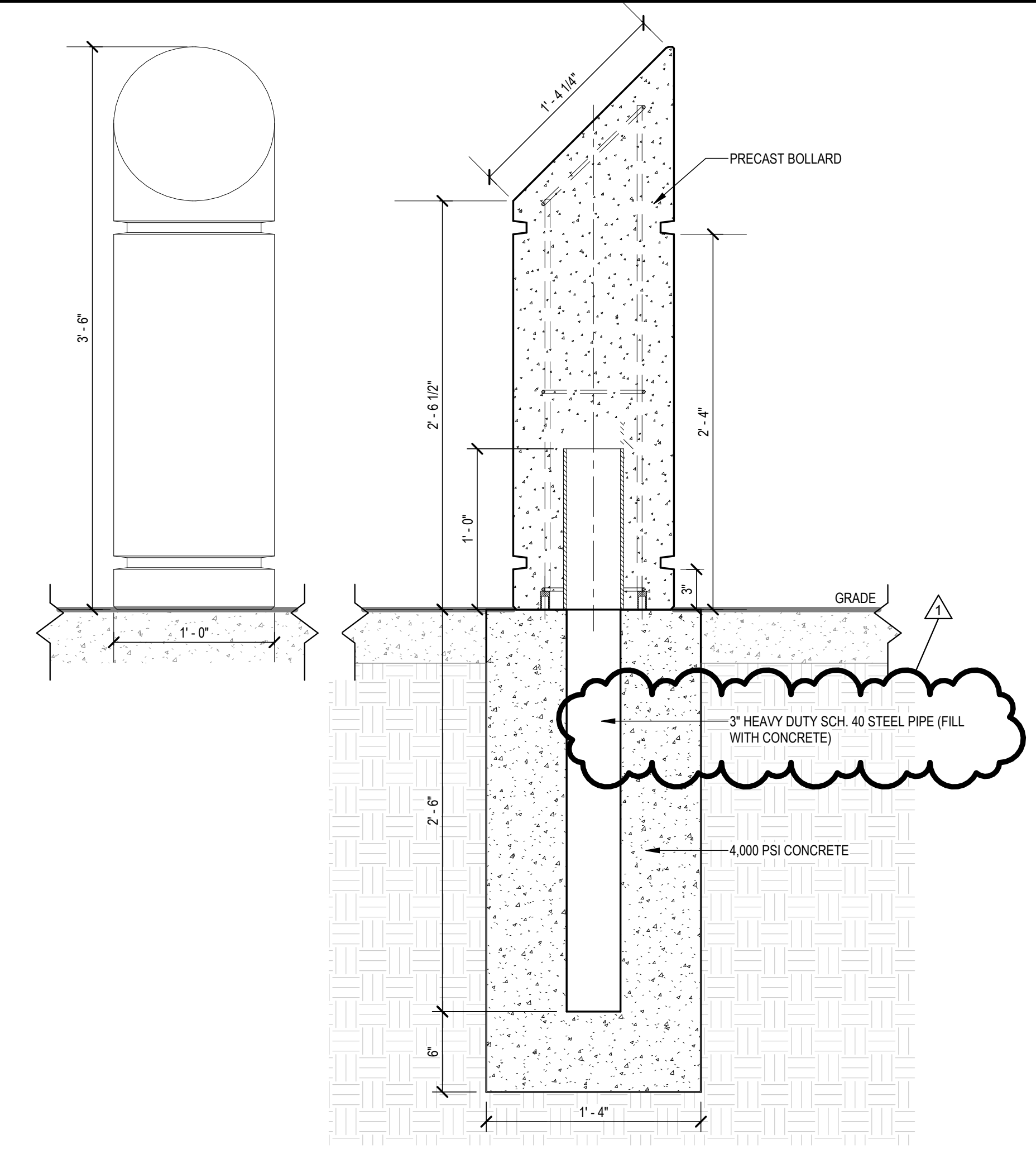
ENLARGED ELEVATIONS

DRAWN	CHECKED
JSA	RAP
CBR	DATE
	10.06.2025
	COMM. NO.
	25094

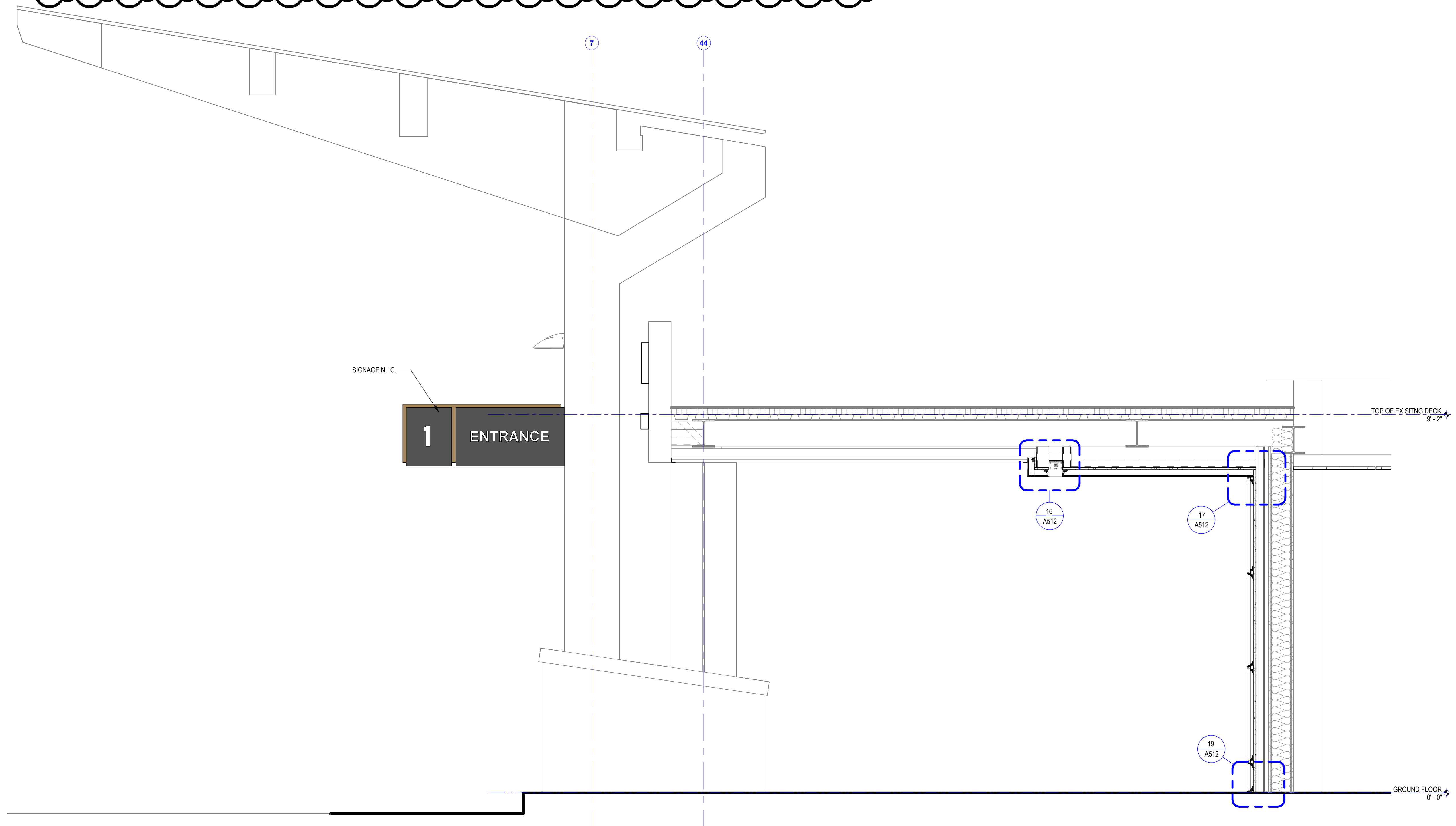
NO.	REVISIONS	DATE
1	ADDENDUM NO. 2	10/27/2025
	DESCRIPTION	



3 TYPICAL RAMP
3/4" = 1'-0"



2 BOLLARD DETAIL
1 1/2" = 1'-0"



1 TYPICAL SECTION @ CANOPY
3/4" = 1'-0"

RENOVATIONS TO
CRW - CURBSIDE EXTERIOR & TERMINAL ELEVATOR IMPROVEMENTS
WEST VIRGINIA INTERNATIONAL YEAGER AIRPORT (CRW)
CHARLESTON, WV

BIDDING DOCUMENTS

© by ZMM LLC.

CANOPY SECTION

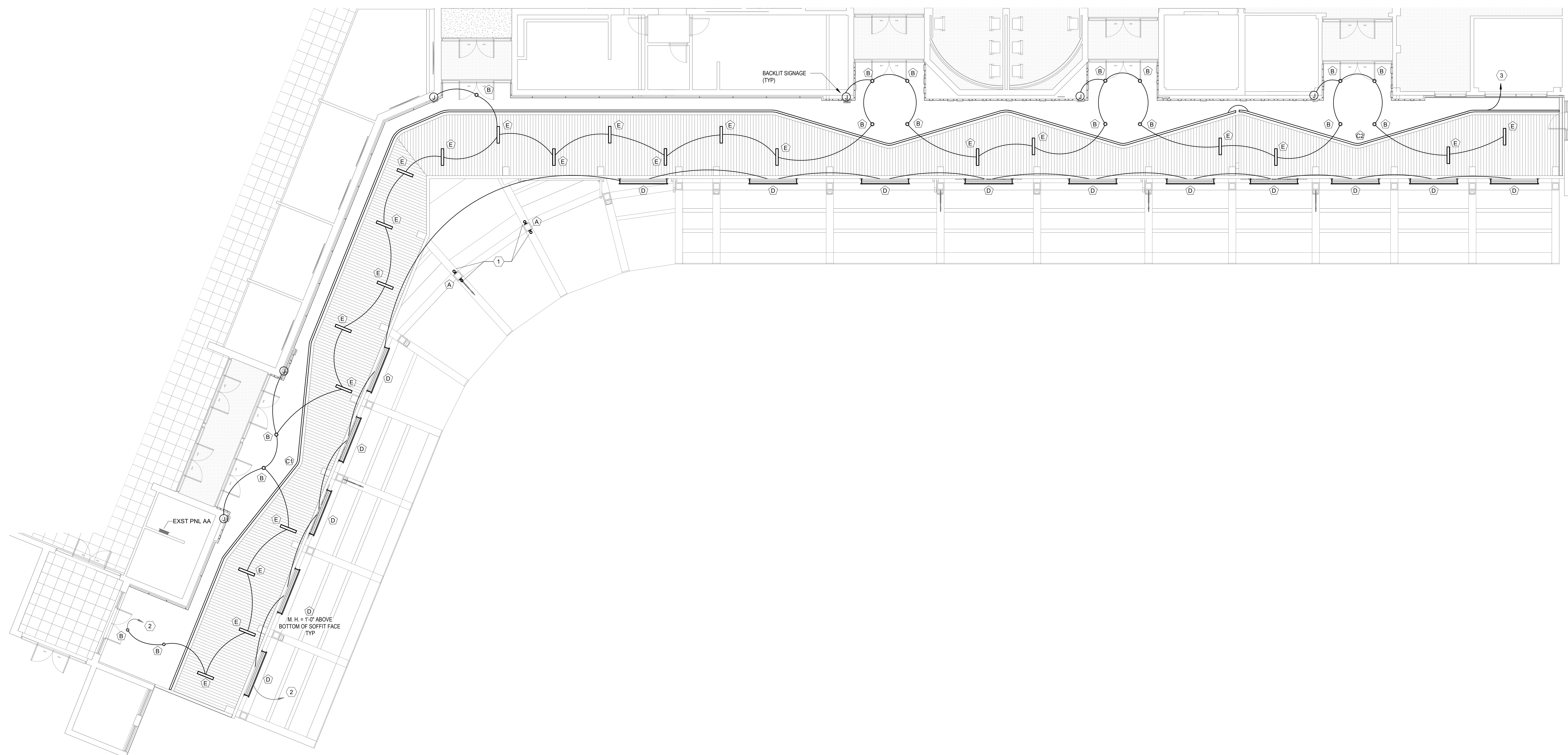
DRAWN	CHECKED
JSA	RAP
DATE	DATE
	10.06.2025
COMM. NO.	COMM. NO.
	25094

KEYED NOTES

- NEW WALL SCONCE LIGHT FIXTURES ARE TO BE CONNECTED TO EXISTING CIRCUIT RETAINED FROM DEMO. PROVIDE NEW CONDUIT AND WIRING SIZED TO MATCH EXISTING AS NECESSARY TO EXTEND EXISTING CIRCUIT TO NEW LIGHT FIXTURES.
- NEW LIGHT FIXTURE CIRCUIT IS TO BE CONNECTED TO ONE OF (2) EXISTING CIRCUITS RETAINED FROM DEMO. PROVIDE NEW CONDUIT AND WIRING SIZED TO MATCH EXISTING AS NECESSARY TO EXTEND EXISTING CIRCUIT TO NEW LIGHT FIXTURES.
- NEW LIGHT FIXTURE CIRCUIT TO BE CONNECTED TO EXISTING SPACE IN 208Y/120V PANEL FR8. PROVIDE NEW 20A/1P BREAKER IN PANEL. PROVIDE NEW #12 CONDUCTORS AND #12 GROUND IN 3/4" CONDUIT AND CONNECT NEW LIGHT FIXTURES TO NEW BREAKER. PROVIDE RELAY ABOVE ACCESSIBLE CEILING TO CONTROL NEW LIGHTING CIRCUIT. RELAY IS TO BE CONTROLLED BY EXISTING EXTERIOR LIGHTING CIRCUIT SUCH THAT ALL LIGHTS ARE CONTROLLED TOGETHER.

LIGHTING FIXTURE SCHEDULE

ID	MANUFACTURER	MODEL	TYPE	LUMENS	WATTS	VOLTS	MOUNTING	DESCRIPTION	ALTERNATE MANUFACTURERS
A	GOTHAM	IC04UDWC 48K30 AR LS 65D U50LM U65D	LED	3000 DN/5000 UP	90	UNV	WALL	ROUND CYLINDER WITH DOWNLIGHT AND UPLIGHT. WET LOCATION LISTED. NATURAL ALUMINUM FINISH.	COOPER, HUBBELL, SIGNIFY, OR EQUIVALENT MEETING BASIS OF DESIGN QUALITY AND PERFORMANCE
B	KIRLIN	LR-06IPD 3000L 120 RWF WFL 40K	LED	3000	28	120	RECESSED	6" DOWNLIGHT, WET LOCATION LISTED. WHITE FINISH.	COOPER, HUBBELL, SIGNIFY, OR EQUIVALENT MEETING BASIS OF DESIGN QUALITY AND PERFORMANCE
C1	PMC LIGHTING	ARCX D TRM 40K 035 FPC WHT UNV BABAA	LED	350 LM/FT	22 W/FT	120	RECESSED	CUSTOM SHAPED 4" LINEAR FIXTURE, DAMP LOCATION RATED.	COOPER, HUBBELL, SIGNIFY, OR EQUIVALENT MEETING BASIS OF DESIGN QUALITY AND PERFORMANCE
C2	PMC LIGHTING	ARCX D TRM 40K 035 FPC WHT UNV BABAA	LED	350 LM/FT	22 W/FT	UNV	RECESSED	CUSTOM SHAPED 4" LINEAR FIXTURE, DAMP LOCATION RATED.	COOPER, HUBBELL, SIGNIFY, OR EQUIVALENT MEETING BASIS OF DESIGN QUALITY AND PERFORMANCE
D	SPL LIGHTING	ECHO ROUND S S EXTERIOR EEW11502	LED	9800	115	UNV	WALL	6" LINEAR, AMBABLE UPLIGHT FIXTURE. WET LOCATION LISTED. BLACK FINISH.	COOPER, HUBBELL, SIGNIFY, OR EQUIVALENT MEETING BASIS OF DESIGN QUALITY AND PERFORMANCE
E	MARK ARCH LITG	SLOT/LOP 3FT FLP 80CRI 40K 60LMF 8AA WL	LED	600 LM/FT	6 W/FT	120	RECESSED	6" x 3'-0" LINEAR LIGHT FIXTURE. WET LOCATION LISTED.	COOPER, HUBBELL, SIGNIFY, OR EQUIVALENT MEETING BASIS OF DESIGN QUALITY AND PERFORMANCE
F	LITHONIA	FEM L48 6000LM LPCL WD MVOLT 40K 80CRI	LED	6000	39	UNV	WALL	VANDAL-RESISTANT, LINEAR LIGHT WITH WHITE POLY LENS, WET LOCATION RATED. EXTERNAL OCCUPANCY SENSOR WHICH DIMS TO 50% OUTPUT WHEN INACTIVE.	COOPER, HUBBELL, SIGNIFY, OR EQUIVALENT MEETING BASIS OF DESIGN QUALITY AND PERFORMANCE
Z	LITHONIA	OLVTVM	LED	600	15	UNV	WALL	VAPOR TIGHT ELEVATOR PIT JELLYJAR LIGHT FIXTURE.	COOPER, HUBBELL, SIGNIFY, OR EQUIVALENT MEETING BASIS OF DESIGN QUALITY AND PERFORMANCE



NO.	REVISIONS	DATE
1	ADDITIONAL NO. 2	10.27.2025

RENOVATIONS TO
CRW - PRE SECURITY
WEST VIRGINIA INTERNATIONAL YEAGER AIRPORT (CRW)
CHARLESTON, WV
BIDDING DOCUMENTS

© by ZMM LLC.

LIGHTING NEW WORK PLAN

DRAWN KPS	CHECKED TFK
DATE 10.06.2025	
COMM. NO. 25043	